

Quantitative Equities

What valuations and interest rates tell us about equity factors

Sustainable Investing Expertise by
ROBECOSAM

- Value, Low risk, Quality and Momentum trade at attractive valuations
- Fundamentals of Value stocks have improved
- Factor premiums persist across interest rate cycles

Given the current market environment, numerous questions have cropped up regarding factor premium expectations. To address some of these, we delve into whether factors currently trade at attractive valuations; we frame the strong first-quarter performance delivered by value and its pullback thereafter; we contextualize the recent sharp changes in the portfolio holdings of momentum strategies; and we investigate the relationship between factors and interest rates.

In general, we find that the low risk, momentum, quality and value factors are trading at attractive valuations relative to their historical levels. More specifically, the spread in valuation multiples between value and growth stocks has reached a new high. Meanwhile, we observe that cheap stocks are also currently more profitable than their expensive counterparts and exhibit better earnings revisions.

In terms of the relationship between the value factor and yield changes, we argue that while it is evident in the recent period, it is much weaker over the long run. Furthermore, we also find similarly dynamic relationships for the low risk, momentum and quality factors. In our view, this implies that a multi-factor portfolio does not only diversify factor risk, but also factor sensitivities to interest rates as these vary widely across factors and time.

2021 has been a mixed bag for Value

After enduring a harsh quant winter, value strategies generated strong returns in the last quarter of 2020 and the first quarter of 2021, leading us to conclude that 'spring had

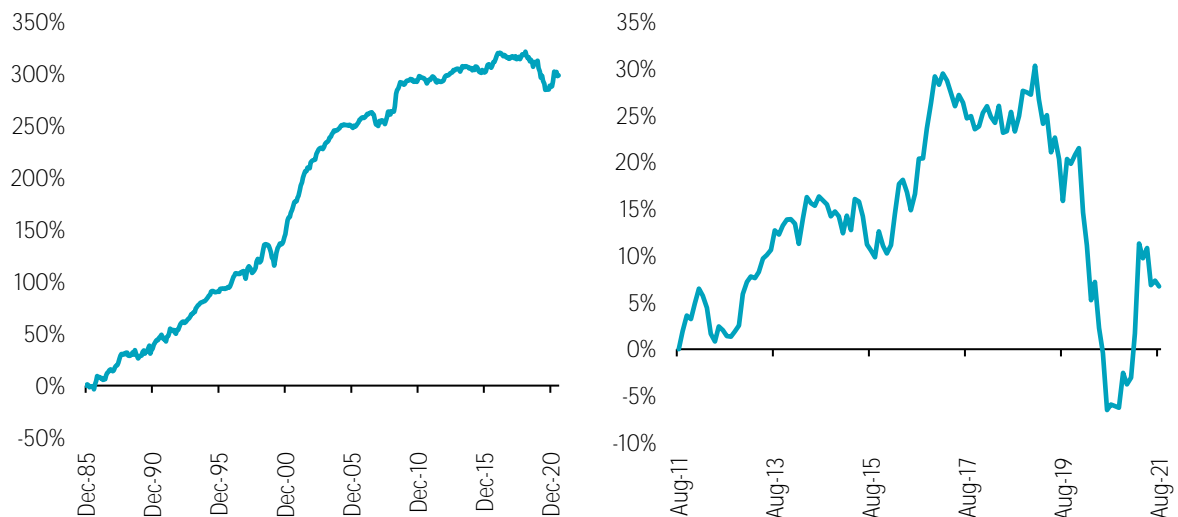
Article
For professional investors
September 2021

Guido Baltussen, PhD
Matthias Hanauer, PhD, CFA
Sebastian Schneider
Laurens Swinkels, PhD



sprung'.¹ In recent months, however, the long-awaited value comeback has lost some of its steam. Figure 1 depicts the cumulative performance of the enhanced value factor in global equity markets since 1985 and over the last 10 years, respectively.² This illustrates that value has delivered attractive long-term returns, although it encountered a challenging period between 2019 and mid-2020. But in the fourth quarter of 2020, it displayed a strong resurgence before slowing down in June 2021.

Figure 1 | Cumulative return for the enhanced Value factor



Source: Refinitiv. The figure shows the cumulative return of an enhanced value strategy (see footnote 2 and the appendix for more details on the enhanced value strategy). The investment universe consists of constituents of the MSCI Developed and Emerging Markets indices. Before 2001, we use the FTSE World Developed index for developed markets (going back to December 1985), and for emerging markets, the largest 800 constituents of the S&P Emerging BMI at the semi-annual index rebalance (going back to December 1995). The sample period is January 1986 to August 2021 (left side) and September 2011 to August 2021 (right side), respectively.

Value factor remains attractive on valuation and fundamental grounds

The poor performance of value strategies from 2019 to mid-2020 stemmed from an extreme widening of valuation multiples between value and growth stocks, with the former getting cheaper relative to the latter.¹ Figure 2 shows the valuation spread of the value factor, i.e. the differences in valuation multiples of value and growth stocks.³ As we control for valuation differences that are normally observed between both portfolios, a valuation spread above 1 indicates cheapness and a valuation spread below 1 indicates that the factor is more expensive. In the last few years, we saw this spread surpass levels last observed at the height of the tech bubble in the late 1990s, indicating extreme levels of cheapness for the value factor from a historical perspective.

But is the value style less attractive now given the upswing over the first quarter of 2021? We argued the 2019-2020 drawdown mainly resulted from an extreme widening of valuation multiples between value and growth stocks. Thus,

¹ See: Baltussen, G., and Van Vliet, P., August 2020, "[Will Value survive the quant winter?](#)", Robeco article; Hanauer, M. X., and Schneider, S., May 2021, "[Spring has sprung for Value investing](#)", Robeco article.

² We define value as in Blitz, D. C., and Hanauer, M. X., January 2021, "[Resurrecting the value premium](#)", Journal of Portfolio Management. More specifically, the enhanced value strategy is based on a composite of book-to-market (R&D adjusted), EBITDA/EV, CF/P, and NPY metrics. Value stocks are sorted into quintile portfolios based on the valuation composite, in a region and sector neutral manner for developed markets and in a country neutral manner for emerging markets. Quintile portfolios are equal-weighted and rebalanced monthly. Our sample comprises the standard MSCI All Countries Index constituents, i.e., large and mid-cap stocks across both developed and emerging markets. Details regarding the universe, value definition, and neutralities are provided in the appendix.

³ The 'value spread' is expressed as the ratio of a basket of valuation multiples of the top and bottom quintile value portfolios. We control for value spread differences that are normally observed between both portfolios, such that a value spread above one indicates cheapness. Since cheap stocks by definition have higher fundamental value to price ratios than their expensive peers, it is particularly important for the value factor to scale the value spread by its historical normal level.

following the same logic, a sharp narrowing of this spread could have been responsible for the recent positive value returns. Figure 2, however, illustrates that it only shrunk slightly during this period.

More recently, the spread has widened again – scaling new highs in August 2021 – as the tepid second- and third-quarter returns delivered by value stocks coincided with improvements in the operating performance of the same companies (more on this below). Therefore, we believe the value factor remains very attractive from a fundamental perspective.

Figure 2 | Composite valuation spread for the enhanced Value factor



Source: Refinitiv. The figure shows the composite valuation spread between the top and bottom quintile portfolios of the enhanced value strategy. The investment universe consists of constituents of the MSCI Developed and Emerging Markets indices. Before 2001, we use the FTSE World Developed index for developed markets (going back to December 1985), and for emerging markets, the largest 800 constituents of the S&P Emerging BMI at the semi-annual index rebalance (going back to December 1995). The value spread is the average spread of the book-to-market (R&D adjusted), EBITDA/EV, and CF/P. The sample period is January 1986 to August 2021.

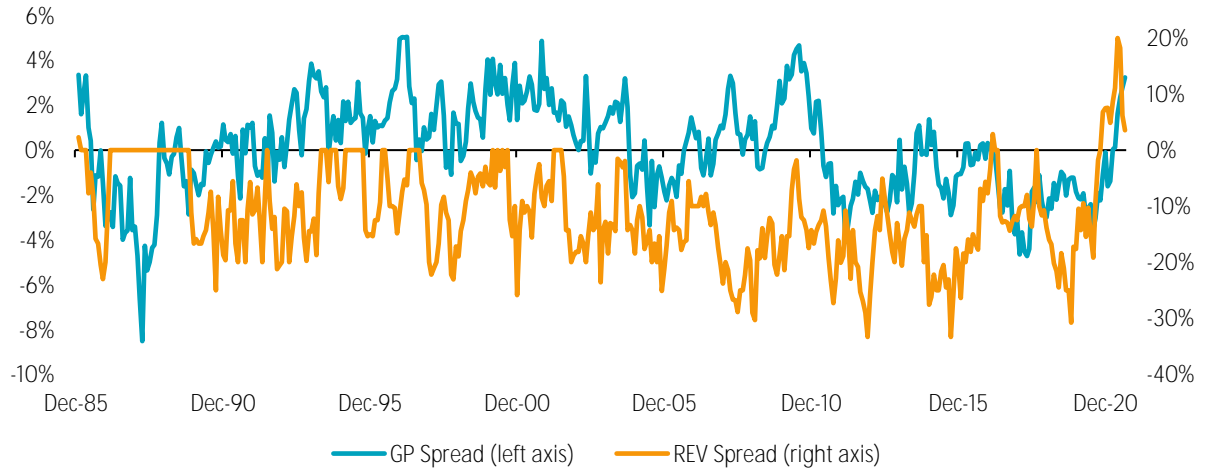
In terms of operating performance, Figure 3 depicts the gross profitability and earnings revisions of value versus growth stocks. On average, cheap stocks displayed gross profitability levels that were more than 3% higher than those of their expensive counterparts as at the end of August 2021. This represents a strong improvement from the 2018-2020 period, when the profitability of value stocks was markedly lower.⁴

Earnings expectations, as proxied by analyst earnings per share (EPS) revisions, for value stocks versus those of their growth peers have also improved since the end of 2020. Figure 3 shows that analysts have tended to issue more earnings upgrades than downgrades for expensive stocks compared to cheap ones in our sample period. However, earnings revisions for value stocks have been better than those for their growth counterparts over the last few months. In fact, the spread in earnings revisions between value and growth stocks has only been positive in recent history.

A question that often arises is whether the widening of the value spread is driven by the cheap or the expensive side, i.e., are value stocks cheaper than in history or growth ones more expensive? To address this, we calculated two valuation spreads in a similar vein to the analysis in Figure 2. But this time around, we compared the valuations of the extreme top and bottom value quintile portfolios with the middle quintile portfolio, i.e. value/middle and middle/growth. For each series, we made the cheaper portfolio the numerator so that they both reflect higher figures when value is cheaper.

⁴ Other profitability measures, such as ROE, show a similar trend.

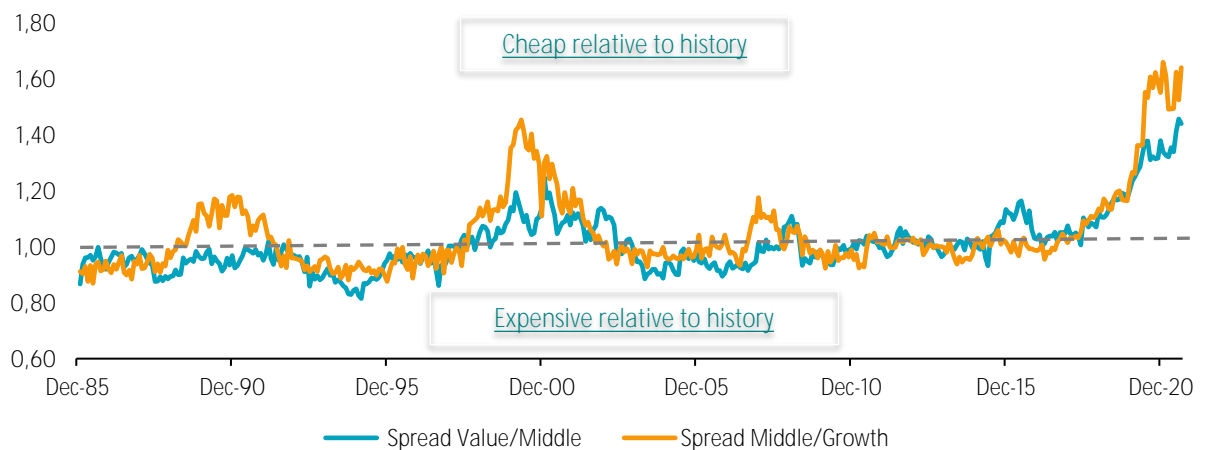
Figure 3 | Spreads in gross profitability and analyst EPS revisions (FY2) for the enhanced Value factor



Source: Refinitiv. The figure shows the spread in gross profitability (GP Spread, left axis) and spread in analyst EPS FY2 revisions (REV Spread, right axis) between the top and bottom quintile portfolios of the enhanced value strategy. The investment universe consists of constituents of the MSCI Developed and Emerging Markets indices. Before 2001, we use the FTSE World Developed index for developed markets (going back to December 1985), and for emerging markets, the largest 800 constituents of the S&P Emerging BMI at the semi-annual index rebalance (going back to December 1995). The sample period is January 1986 to August 2021.

Figure 4 illustrates these two valuation spreads. Based on this assessment, growth stocks are still much more expensive than their middle-priced peers, with the current valuation spread between the two only marginally below the all-time peak in January 2021. Similarly, value stocks are much cheaper than their middle-priced counterparts, as the valuation spread between the two reached a new peak at the end of July 2021 and only marginally decreased in August. This indicates that value investing can benefit from overweighting cheap stocks and underweighting expensive ones in a long-only setting, given that value stocks currently trade at very cheap levels and growth stocks at very expensive levels.

Figure 4 | Composite valuation spreads for value/middle and middle/growth for the enhanced Value factor



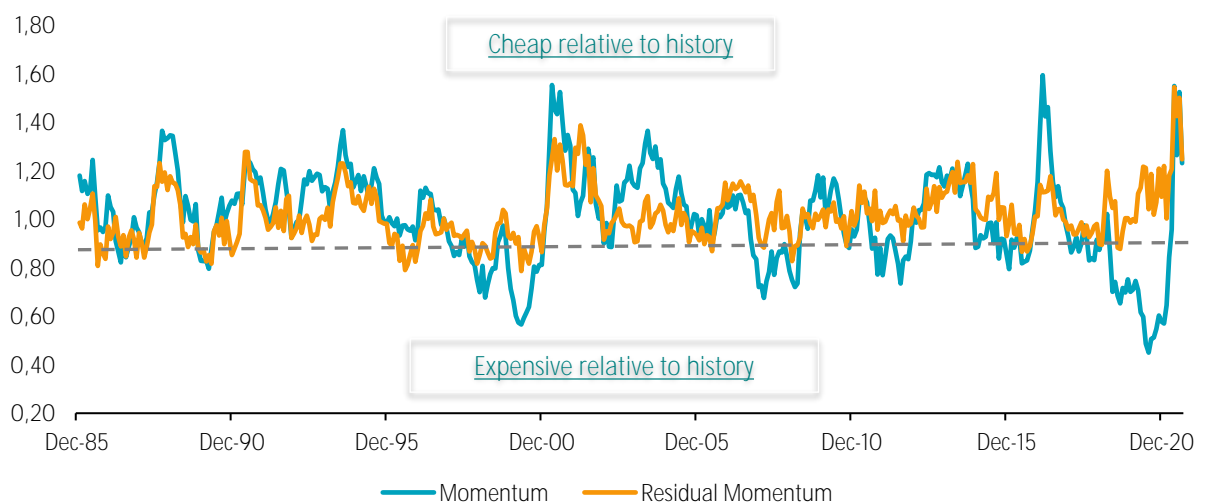
Source: Refinitiv. The figure shows the composite valuation spread between the top (value) and the middle and the middle and bottom (growth) quintile portfolios of an enhanced value strategy, respectively. The investment universe consists of constituents of the MSCI Developed and Emerging Markets indices. Before 2001, we use the FTSE World Developed index for developed markets (going back to December 1985), and for emerging markets, the largest 800 constituents of the S&P Emerging BMI at the semi-annual index rebalance (going back to December 1995). The sample period is January 1986 to August 2021.

A sharp shift in Momentum valuations

Given the recent considerable changes in portfolio holdings for many momentum strategies, we performed the same analysis on the momentum factor.⁵ Figure 5 depicts the valuation spreads for the value and momentum factors. In recent years, the momentum style has leaned heavily towards more expensive (growth) stocks. But this shifted very swiftly in March 2021, as momentum strategies became significantly tilted towards cheaper (value) stocks. As a result, the factor is now trading at attractive valuations.

Note, however, that when the momentum factor experiences such sudden changes in its portfolio holdings, it can cause it to have a significant overlap with the value factor in terms of its underlying exposure. This could result in a strong positive correlation between the performance of the two factors. Therefore, we believe it is important to account for these dynamic style tilts when constructing the momentum factor in order to offer multi-factor investors a well-diversified portfolio and to reduce the risk of the momentum factor. For example, this can be accomplished by following a residual momentum approach.⁶ Indeed, the orange line in Figure 5 shows that the valuation spread of the residual momentum approach is less volatile over time.

Figure 5 | Composite valuation spreads for the Momentum and Residual Momentum factors



Source: Refinitiv. The figure shows the composite valuation spread between the top and bottom quintile portfolios of the momentum and residual momentum factors. The investment universe consists of constituents of the MSCI Developed and Emerging Markets indices. Before 2001, we use the FTSE World Developed index for developed markets (going back to December 1985), and for emerging markets, the largest 800 constituents of the S&P Emerging BMI at the semi-annual index rebalance (going back to December 1995). The sample period is January 1986 to August 2021.

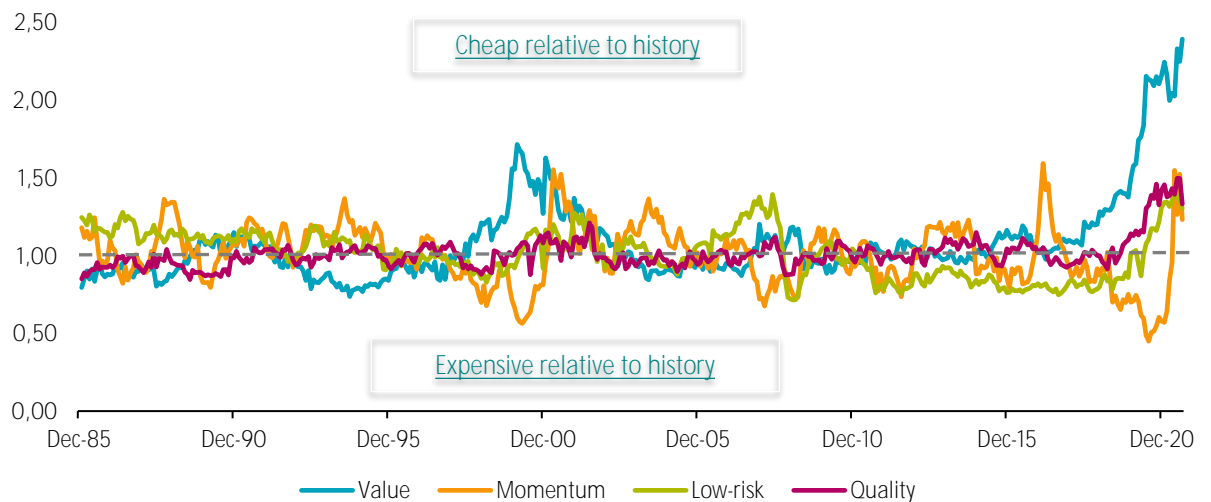
Low-risk and Quality factors look more enticing

We also carried out the same exercise on two other factors: low risk and quality. Figure 6 shows the valuation spreads for the value, momentum, low risk and quality factors. In line with value and momentum, we observed that low risk and quality have also become more attractively valued. For the latter two, this trend became quite apparent around the start of the Covid-19 pandemic. Overall, Figure 6 indicates that all four factors are currently attractively priced from a fundamental point of view, i.e. they currently trade at lower valuations compared to their history.

⁵ See Boyde E., April 2021, "[Growth-value rotation to prompt major rebalancing of \\$15bn ETF](#)", Financial Times article.

⁶ See: Blitz, D. C., Huij, J., and Martens, M., June 2011, "[Residual Momentum](#)", Journal of Empirical Finance. For further perspective on the momentum factor, see: Baltussen, G., Lansdorp, S., and Vidojevic, M., February 2021, "[What's up with Momentum?](#)", Robeco article.

Figure 6 | Composite valuation spreads for the Value, Momentum, Low-risk and Quality factors



Source: Refinitiv. The figure shows the composite valuation spread between the top and bottom quintile portfolios of the value, momentum, low-risk, and quality factors. The investment universe consists of constituents of the MSCI Developed and Emerging Markets indices. Before 2001, we use the FTSE World Developed index for developed markets (going back to December 1985), and for emerging markets, the largest 800 constituents of the S&P Emerging BMI at the semi-annual index rebalance (going back to December 1995). The sample period is January 1986 to August 2021.

Table 1 also confirms this phenomenon as it compares the current composite valuation spreads of the four factors with their respective historical levels. The valuation spread for value, as at the end of August 2021, is in the 100th percentile when taking into account more than 35 years of monthly data. Moreover, this peak probably falls outside of the range of typical assumptions based on historical distributions, given that it is a remarkable 4.8 standard deviations above the historical average. Similarly, the valuation spread for quality is in the 97th percentile versus its own history and more than 3 standard deviations away from its long-term average. The valuation spreads for low risk and momentum are also above the 90th percentile, but with less extreme deviations compared to their own history.

Given that all four factors currently trade at lower valuations compared to their normal historical levels, the equal combination of the factors (1/N) is also attractively valued when viewed over the same time period. Indeed, the composite valuation spread for this multi-factor portfolio is in the 99th percentile as at the end of August 2021, significantly above its long-term average to the tune of 5.5 standard deviations.

Table 1 | Percentiles and Z-Scores for current versus historical composite valuation spreads

	Value	Low Risk	Quality	Momentum	1/N
Percentile	100%	97%	97%	91%	99%
Z-Score	4.8	1.9	3.3	1.2	5.5

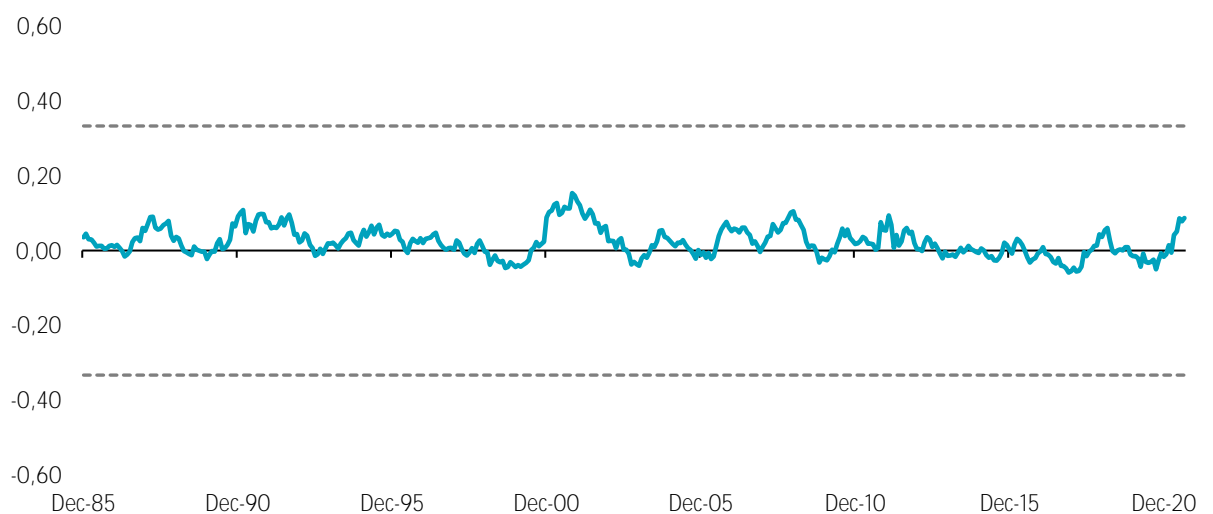
Source: Robeco, Refinitiv, Bloomberg. The table shows the percentiles and Z-Scores of the current versus historical composite valuation spreads for the value, momentum, low-risk and quality factors. The investment universe consists of constituents of the MSCI Developed and Emerging Markets indices. Before 2001, we use the FTSE World Developed index for developed markets (going back to December 1985), and for emerging markets, the largest 800 constituents of the S&P Emerging BMI at the semi-annual index rebalance (going back to December 1995). The sample period is January 1986 to August 2021.

Diversification benefits across factors continue to persist

Despite the attractive valuations of all four factors, the correlations between them remain relatively low. This is illustrated in Figure 7 which shows the average pairwise rank correlation across factor scores over time. The value, momentum, low risk and quality factors typically exhibit a low average pairwise rank correlation, with a long-term average of 0.02 over our sample period. While this correlation has increased slightly to an average of 0.09 as at the end of August 2021, it is still economically small, especially in contrast to the historically high valuation spreads. Moreover, it remains within the range of previous observations. Consequently, diversification benefits across factors continue to persist in our view.

We also find similar results when we look at the correlation of historical 12-month returns across factors. That said, we do believe it is important to manage the balance between exposures to individual factors, both in single and multi-factor solutions, when constructing portfolios.

Figure 7 | Average pairwise rank correlation across Value, Momentum, Low risk and Quality factor scores



Source: Refinitiv. The figure shows the average pairwise rank correlation across value, momentum, low risk, and quality factors scores. The investment universe consists of constituents of the MSCI Developed and Emerging Markets indices. Before 2001, we use the FTSE World Developed index for developed markets (going back to December 1985), and for emerging markets, the largest 800 constituents of the S&P Emerging BMI at the semi-annual index rebalance (going back to December 1995). The sample period is January 1986 to August 2021.

Value has become slightly responsive to interest rates increases in recent times

We also often get questions on how factor premiums relate to interest rates. For instance, a topical issue is whether factor premiums are driven especially by falling yields, as we have seen over the last few decades, or whether they will benefit equally from rising interest rates. In particular, there is a growing dialogue around the possible connection between the value premium and yield changes nowadays. Many investors inquire whether the recent value performance swings are instigated by increasing and declining yields.

The typical argument is that as growth stocks exhibit longer duration than their value counterparts, they should benefit from a lower discount rate being applied to their cash flows and suffer from rising yields. We acknowledge this line of reasoning. Indeed, it is hard not to notice the apparent link between climbing yields and the rally in value stocks in the first quarter of 2021.

That said, we believe the important question is whether this apparent relationship is structural and can be embedded in portfolios. Several observations suggest it is not. Firstly, yields have generally declined since 1980 and value has performed well over the majority of this period. Secondly, value has been one of the strongest factors in Japan, despite a trend of falling and very low interest rates for more than 30 years. Thirdly, one could argue that value stocks are 'bond-like' as their prices are driven less by growth expectations and more by their earnings and dividend power in the years

ahead. This argument is especially true for dividend-tilted value portfolios. Therefore, a drop in bond yields should benefit value stocks, while a rise should hurt them.

In 2012, several Robeco authors⁷ released a paper on investors' (myopic) investment horizons. They found that value stocks tended to have a positive bond beta and usually benefited when yields dropped. This was particularly visible on an annual basis as value stocks typically performed well in the years in which bond yields fell. Furthermore, many of these explanations are also relevant to other factors, most notably low risk. Indeed, low-risk stocks are more 'bond-like' in nature, while their high-risk counterparts tend to be more speculative and driven by potential long-term growth considerations.

Therefore, an important question to answer is how stock factor premiums relate to yield changes. To examine this, we ran several empirical tests. We took the global sample of factor premiums between January 1986 and August 2021 and regressed them on the contemporaneous 1-month change in the global (average) 10-year government bond yield.⁸ As equity market beta is an important driver of returns, we included the equity market return as a control variable. In Table 2, Panel A depicts the resulting coefficients and t-statistics on the yield changes over our full sample period (January 1986 - August 2021) as well as the last 10-year subperiod (September 2011 and August 2021) and the interval before (January 1986 and August 2011).

⁷ See: Baltussen, G., Post, T., and Van Vliet, P., February 2009, "Downside risk aversion, fixed income exposure, and the value premium puzzle", *Journal of Banking and Finance* 36, p.3382-3398.

⁸ We take the average across the following developed government bond markets: US, UK, Germany and Japan.

Table 2 | Factor premiums and sensitivity to yield changes

Panel A: Sensitivity of factor premiums to 1-month yield changes						
	January 1986 to August 2021		January 1986 to August 2011		September 2011 to August 2021	
	Coefficient	t	Coefficient	t	Coefficient	t
Value	1.86*	(3.31)	1.14	(1.91)	5.60*	(3.82)
Low risk	-3.46*	(-5.85)	-3.20*	(-4.91)	-5.40*	(-3.49)
Quality	-0.42	(-1.40)	-0.64	(-1.85)	0.81	(1.17)
Momentum	-2.00*	(-2.55)	-1.26	(-1.39)	-6.12*	(-3.68)
Residual Momentum	-0.81	(-1.92)	-0.43	(-0.88)	-3.00*	(-3.40)

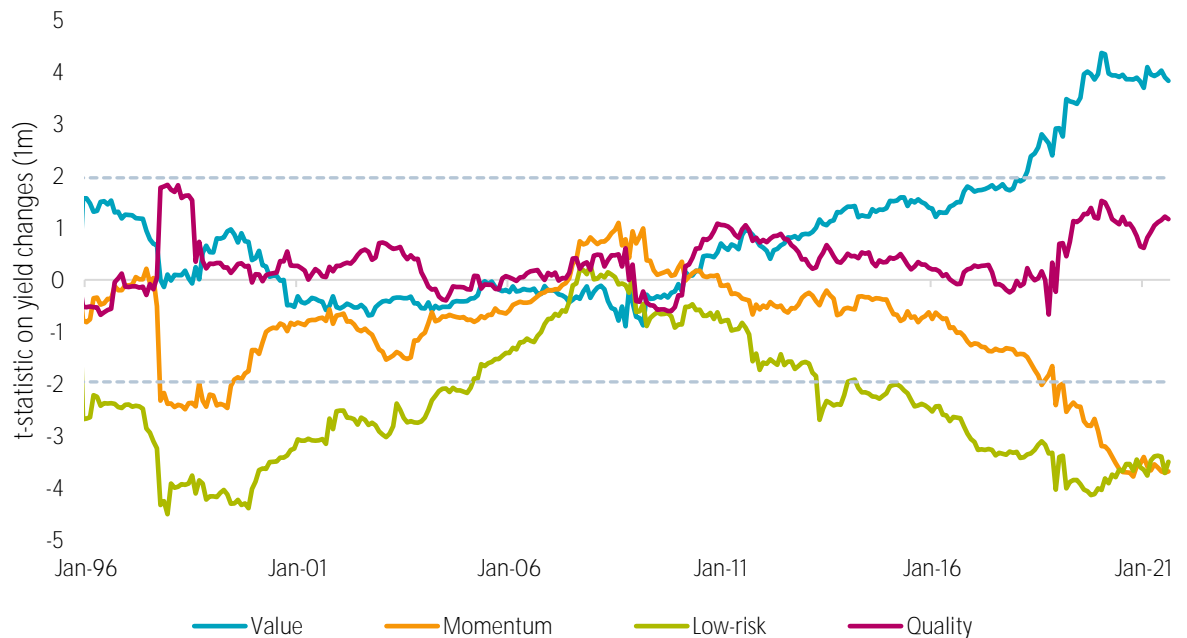
Panel B: Sensitivity of factor premiums to 12-month yield changes						
	January 1986 to August 2021		January 1986 to August 2011		September 2011 to August 2021	
	Coefficient	t	Coefficient	t	Coefficient	t
Value	1.23	(0.71)	-0.42	(-0.22)	8.43	(1.78)
Low risk	-2.83	(-1.62)	-2.36	(-1.21)	-3.59	(-1.11)
Quality	0.12	(0.17)	-0.74	(-1.22)	4.89	(1.73)
Momentum	-0.69	(-0.31)	-0.62	(-0.24)	0.06	(0.02)
Residual Momentum	-0.10	(-0.07)	-0.21	(-0.15)	0.10	(0.07)

Panel C: Predicting next month's factor performances						
	January 1986 to August 2021		January 1986 to August 2011		September 2011 to August 2021	
	Coefficient	t	Coefficient	t	Coefficient	t
Value	-0.28	(-0.49)	-0.17	(-0.29)	-0.82	(-0.54)
Low risk	1.20	(1.46)	0.73	(0.79)	4.08*	(2.02)
Quality	0.79*	(2.41)	0.84*	(2.23)	0.49	(0.70)
Momentum	1.50	(1.85)	0.94	(1.01)	4.86*	(2.74)
Residual Momentum	0.46	(1.06)	0.13	(0.27)	2.48*	(2.73)

Source: Robeco, Refinitiv, Bloomberg. The investment universe consists of constituents of the MSCI Developed and Emerging Markets indices. Before 2001, we use the FTSE World Developed index for developed markets (going back to December 1985), and for emerging markets, the largest 800 constituents of the S&P Emerging BMI at the semi-annual index rebalance (going back to December 1995). Regressions explain or predict annualized factor premiums with change in global yields (in percentage points) and in Panel A and B include the global equity market return as a control variable (not reported in the table). Standard errors are, where applicable, Newey-West corrected. A '*' indicates significance at the 5% confidence level. The sample period is January 1986 to August 2021.

We observed that the value factor tended to perform better in the months in which yields rose over the full sample period. However, this relationship is also highly dynamic as the value factor was not significantly related to changes in bond yields before August 2011, but it became considerably linked in the last 10-year subperiod. Figure 8 illustrates these dynamics over time by showing the t-statistic on the change in bond yields based on 10-year rolling regressions. The chart reveals that the relationship between the value premium and yield increases was largely concentrated in the last 10 years.

Figure 8 | Factor premiums and their sensitivity to yield changes



Source: Robeco, Refinitiv, Bloomberg. The investment universe consists of constituents of the MSCI Developed and Emerging Markets indices. Before 2001, we use the FTSE World Developed index for developed markets (going back to December 1985), and for emerging markets, the largest 800 constituents of the S&P Emerging BMI at the semi-annual index rebalance (going back to December 1995). Regressions use 10-year rolling yield changes and include the global equity market return as a control variable. The sample period is January 1986 to August 2021.

But interest rate sensitivities diminish over longer horizons, vary across factors and are economically small

We also looked at the relationship between annual value returns and annual yield changes. As demonstrated in the previously mentioned research paper, it is important to evaluate the relationship between the value premium and yield changes annually, given this is an evaluation horizon commonly employed by investors. The results are shown in Panel B of Table 2. Over the full sample period, value was not significantly related to annual yield changes, indicating that any relationship is relatively short-lived.

In our analysis, we also found that the impact of yield changes on the global value premium is relatively limited. This is demonstrated by the coefficients in Panel A and B of Table 2. For example, a 1% decrease in yields infers a decline in the value premium of 5.6 and 8.4 basis points over a month and year, respectively. Conversely, this also holds as a 1% increase in yields implies a rise in the value premium of 5.6 and 8.4 basis points over a month and year, respectively. If we were to find ourselves in a scenario in which inflation and yields surge, then the impact on the value premium would be greater. For instance, a 3% spike in yields would coincide with a value premium that is around 17 and 25 basis points higher over a month and year, respectively.

Interestingly, other factor premiums also have a dynamic relationship with yield changes. Low risk had a somewhat negative link, albeit limited, as highlighted in earlier publications on the low-risk factor⁹. However, this was not uniform over the sample period as the connection was largely absent around the 2000s. Moreover, these sensitivities are less prevalent in our enhanced low-risk portfolios as we account for other factor exposures and explicitly manage interest rate sensitivity.

⁹ See: Blitz, B., Van der Grient, B., Van Vliet, P., June 2014, "[Interest rate risk in low-volatility strategies](#)", Robeco article.

Momentum was negatively related to yield changes over the full sample period. But similar to value, this effect seemed to be mostly concentrated in the last years of the sample. Moreover, a residual momentum approach significantly reduces the size of this sensitivity as depicted by the substantially smaller coefficients in Panel A of Table 2. Finally, quality returns were generally unrelated to yield changes over the entire interval.

Further, over the full sample period, none of the factor premiums were significantly related to annual yield changes and all coefficients decreased for the annual horizon compared to the monthly, indicating that any relationship is relatively short-lived. Therefore, we can conclude that most factor premiums do not have a stable or economically material relationship with bond yield changes on an annual basis.

A final question is whether investors can use the information on bond yield changes to predict factor premiums? To examine the predictive power of this information, we ran regressions of future factor premiums on past yield changes. The results are shown in Panel C of Table 2. Over the full sample period, yield changes told us little about future factor premiums. This observation was also similar for the two subperiods. The only exception was that declining yields had some predictive power on momentum premiums over the last 10 years of our sample.

However, we believe investors should be wary of relying on a small number of observations. As such, we can conclude that information on yield changes provides little information for factor timing. Moreover, the pervasive low-yield environment of the last few decades does not tell us a lot about the return prospects of factor premiums.

Ultimately, we believe there is an important takeaway from our analysis. In our view, having exposure to multiple factors in a portfolio does not only diversify individual factor and stock risks, but it also diversifies factor sensitivities to yield movements as these vary widely across factors and time.

Conclusion

In our analysis, we examined the value, momentum, low risk and quality factors through a fundamental lens. We established that the spread in valuation multiples between expensive and cheap stocks remains at historically unprecedented levels, while the value factor has also displayed substantial improvements in its fundamentals. Currently, value stocks are more profitable and have better analyst revisions than their growth peers. Furthermore, we determined that the low risk, momentum and quality factors have also recently become cheap relative to their history. In our view, this suggests the value comeback might not be over yet, while other factors also offer attractive opportunities.

We also investigated the relationship between factor premiums and interest rates. Looking at the recent period, it is not difficult to see where this question stems from, given that the outperformance of value coincided with rising yields. However, we observed that this relationship is relatively new and does not appear to be structural. It changes over time, it is evident in monthly but not annual factor returns, it is only witnessed over recent years, and it seems to be economically small. In the long run, it is much weaker or absent. That said, we do acknowledge that interest rate risk is an important element to take into account when managing risk in factor portfolios. In addition, we looked into the yield sensitivity of the low risk, momentum and quality factors and found similarly dynamic relationships. Thus, we believe a multi-factor portfolio does not only diversify factor risk, but also factor sensitivities to interest rates.

Appendix – factor definitions and construction

The enhanced value strategy and the calculation of the value spread follow the methodology described in Blitz, D. C., and Hanauer, M. X., January 2021, "[Resurrecting the value premium](#)", Journal of Portfolio Management.

Universe

The investment universe for the enhanced value factor consists of constituents of the MSCI Developed and Emerging Markets indices. Before 2001, we use the FTSE World Developed index for developed markets (going back to December 1985), and for emerging markets, the largest 800 constituents of the S&P Emerging BMI at the semi-annual index rebalance (going back to December 1995).

Factor definitions

The enhanced value strategy is based on a composite of book-to-market (R&D adjusted), EBITDA/EV, CF/P, and NPY metrics. For quality, we follow [Kyosev et al. \(2020\)](#) and use a composite of gross profitability, accruals and asset growth. (Residual) momentum is defined as the composite of both 12-1 and 6-1 month (residual) price momentum. Low risk is measured by the past 156-week return volatility.

Factor construction

Stocks are sorted into quintile portfolios based on the factor composites and the quintile portfolios are equal-weighted. Factor returns are the return spreads between the top and bottom quintile portfolios.

Neutralities

We apply region and sector neutrality for developed markets by independently ranking stocks within each region/GICS level 1 industry (11 sectors) bucket. Developed market regions are North America, Europe, and Pacific. For emerging markets, we use country neutrality.

Calculation valuation spread

For each multiple and month, we compute the median valuation multiple for both the cheapest and most expensive quintile and compute the spread as the ratio between the two. The three valuation multiples that we use are book-to-market (R&D adjusted), EBITDA/EV, and CF/P. For the composite valuation spread, we first standardize each of the three time series by dividing them by their median. Next, we average the three standardized spreads.

Other spreads

We follow a similar approach for the other spreads but use the difference in the median gross profitability and EPS FY2 revision ratio, respectively, between the cheapest and most expensive quintiles.

Important Information

Robeco Institutional Asset Management B.V. has a license as manager of Undertakings for Collective Investment in Transferable Securities (UCITS) and Alternative Investment Funds (AIFs) ("Fund(s)") from the Netherlands Authority for the Financial Markets in Amsterdam. This marketing document is intended solely for professional investors, defined as investors qualifying as professional clients, who have requested to be treated as professional clients or are authorized to receive such information under any applicable laws. Robeco Institutional Asset Management B.V. and/or its related, affiliated and subsidiary companies, ("Robeco"), will not be liable for any damages arising out of the use of this document. Users of this information who provide investment services in the European Union have their own responsibility to assess whether they are allowed to receive the information in accordance with MiFID II regulations. To the extent this information qualifies as a reasonable and appropriate minor non-monetary benefit under MiFID II, users that provide investment services in the European Union are responsible for complying with applicable recordkeeping and disclosure requirements. The content of this document is based upon sources of information believed to be reliable and comes without warranties of any kind. Without further explanation this document cannot be considered complete. Any opinions, estimates or forecasts may be changed at any time without prior warning. If in doubt, please seek independent advice. This document is intended to provide the professional investor with general information about Robeco's specific capabilities but has not been prepared by Robeco as investment research and does not constitute an investment recommendation or advice to buy or sell certain securities or investment products or to adopt any investment strategy or legal, accounting or tax advice. All rights relating to the information in this document are and will remain the property of Robeco. This material may not be copied or shared with the public. No part of this document may be reproduced or published in any form or by any means without Robeco's prior written permission. Investment involves risks. Before investing, please note the initial capital is not guaranteed. Investors should ensure they fully understand the risk associated with any Robeco product or service offered in their country of domicile. Investors should also consider their own investment objective and risk tolerance level. Historical returns are provided for illustrative purposes only. The price of units may go down as well as up and past performance is no guarantee of future results. If the currency in which the past performance is displayed differs from the currency of the country in which you reside, then you should be aware that due to exchange rate fluctuations the performance shown may increase or decrease if converted into your local currency. The performance data do not take account of the commissions and costs incurred when trading securities in client portfolios or for the issue and redemption of units. Unless otherwise stated, the prices used for the performance figures of the Luxembourg-based Funds are the end-of-month transaction prices net of fees up to 4 August 2010. From 4 August 2010, the transaction prices net of fees will be those of the first business day of the month. Return figures versus the benchmark show the investment management result before management and/or performance fees; the Fund returns are with dividends reinvested and based on net asset values with prices and exchange rates as at the valuation moment of the benchmark. Please refer to the prospectus of the Funds for further details. Performance is quoted net of investment management fees. The ongoing charges mentioned in this document are the ones stated in the Fund's latest annual report at closing date of the last calendar year. This document is not directed to or intended for distribution to or for use by any person or entity who is a citizen or resident of or located in any locality, state, country or other jurisdiction where such distribution, document, availability or use would be contrary to law or regulation or which would subject any Fund or Robeco Institutional Asset Management B.V. to any registration or licensing requirement within such jurisdiction. Any decision to subscribe for interests in a Fund offered in a particular jurisdiction must be made solely on the basis of information contained in the prospectus, which information may be different from the information contained in this document. Prospective applicants for shares should inform themselves as to legal requirements which may also apply and any applicable exchange control regulations and taxes in the countries of their respective citizenship, residence or domicile. The Fund information, if any, contained in this document is qualified in its entirety by reference to the prospectus, and this document should, at all times, be read in conjunction with the prospectus. Detailed information on the Fund and associated risks is contained in the prospectus. The prospectus and the Key Investor Information Document for the Robeco Funds can all be obtained free of charge from Robeco's websites.

Additional Information for US investors

Robeco is considered "participating affiliated" and some of their employees are "associated persons" of Robeco Institutional Asset Management US Inc. ("RIAM US") as per relevant SEC no-action guidance. Employees identified as associated persons of RIAM US perform activities directly or indirectly related to the investment advisory services provided by RIAM US. In those situations these individuals are deemed to be acting on behalf of RIAM US, a US SEC registered investment adviser. SEC regulations are applicable only to clients, prospects and investors of RIAM US. RIAM US is a wholly owned subsidiary of ORIX Corporation Europe N.V. and offers investment advisory services to institutional clients in the US.

Additional Information for investors with residence or seat in Australia and New Zealand

This document is distributed in Australia by Robeco Hong Kong Limited (ARBN 156 512 659) ("RIAM BV"), which is exempt from the requirement to hold an Australian financial services license under the Corporations Act 2001 (Cth) pursuant to ASIC Class Order 03/1103. Robeco is regulated by the Securities and Futures Commission under the laws of Hong Kong and those laws may differ from Australian laws. This document is distributed only to "wholesale clients" as that term is defined under the Corporations Act 2001 (Cth). This document is not intended for distribution or dissemination, directly or indirectly, to any other class of persons. In New Zealand, this document is only available to wholesale investors within the meaning of clause 3(2) of Schedule 1 of the Financial Markets Conduct Act 2013 (FMCA). This document is not intended for public distribution in Australia and New Zealand.

Additional Information for investors with residence or seat in Austria

This information is solely intended for professional investors or eligible counterparties in the meaning of the Austrian Securities Oversight Act.

Additional Information for investors with residence or seat in Brazil

The Fund may not be offered or sold to the public in Brazil. Accordingly, the Fund has not been nor will be registered with the Brazilian Securities Commission (CVM), nor has it been submitted to the foregoing agency for approval. Documents relating to the Fund, as well as the information contained therein, may not be supplied to the public in Brazil, as the offering of the Fund is not a public offering of securities in Brazil, nor may they be used in connection with any offer for subscription or sale of securities to the public in Brazil.

Additional Information for investors with residence or seat in Brunei

The Prospectus relates to a private collective investment scheme which is not subject to any form of domestic regulations by the Autoriti Monetari Brunei Darussalam ("Authority"). The Prospectus is intended for distribution only to specific classes of investors as specified in section 20 of the Securities Market Order, 2013, and must not, therefore, be delivered to, or relied on by, a retail client. The Authority is not responsible for reviewing or verifying any prospectus or other documents in connection with this collective investment scheme. The Authority has not approved the Prospectus or any other associated documents nor taken any steps to verify the information set out in the Prospectus and has no responsibility for it. The units to which the Prospectus relates may be illiquid or subject to restrictions on their resale. Prospective purchasers of the units offered should conduct their own due diligence on the units.

Additional Information for investors with residence or seat in Canada

No securities commission or similar authority in Canada has reviewed or in any way passed upon this document or the merits of the securities described herein, and any representation to the contrary is an offence. Robeco Institutional Asset Management B.V. relies on the international dealer and international adviser exemption in Quebec and has appointed McCarthy Tétrault LLP as its agent for service in Quebec.

Additional information for investors with residence or seat in the Republic of Chile

Neither Robeco nor the Funds have been registered with the *Comisión para el Mercado Financiero* pursuant to Law no. 18.045, the *Ley de Mercado de Valores* and regulations thereunder. This document does not constitute an offer of or an invitation to subscribe for or purchase shares of the Funds in the Republic of Chile, other than to the specific person who individually requested this information on their own initiative. This may therefore be treated as a "private offering" within the meaning of article 4 of the *Ley de Mercado de Valores* (an offer that is not addressed to the public at large or to a certain sector or specific group of the public).

Additional Information for investors with residence or seat in Colombia

This document does not constitute a public offer in the Republic of Colombia. The offer of the Fund is addressed to fewer than one hundred specifically identified investors. The Fund may not be promoted or marketed in Colombia or to Colombian residents, unless such promotion and marketing is made in compliance with Decree 2555 of 2010 and other applicable rules and regulations related to the promotion of foreign Funds in Colombia.

Additional Information for investors with residence or seat in the Dubai International Financial Centre (DIFC), United Arab Emirates

This material is distributed by Robeco Institutional Asset Management B.V. (DIFC Branch) located at Office 209, Level 2, Gate Village Building 7, Dubai International Financial Centre, Dubai, PO Box 482060, UAE. Robeco Institutional Asset Management B.V. (DIFC Branch) is regulated by the Dubai Financial Services Authority ("DFSA") and only deals with Professional Clients or Market Counterparties and does not deal with Retail Clients as defined by the DFSA.

Additional Information for investors with residence or seat in France

Robeco Institutional Asset Management B.V. is at liberty to provide services in France. Robeco France is a subsidiary of Robeco whose business is based on the promotion and distribution of the group's funds to professional investors in France.

Additional Information for investors with residence or seat in Germany

This information is solely intended for professional investors or eligible counterparties in the meaning of the German Securities Trading Act.

Additional Information for investors with residence or seat in Hong Kong

The contents of this document have not been reviewed by the Securities and Futures Commission ("SFC") in Hong Kong. If there is in any doubt about any of the contents of this document, independent professional advice should be obtained. This document has been distributed by Robeco Hong Kong Limited ("Robeco"). Robeco is regulated by the SFC in Hong Kong.

Additional Information for investors with residence or seat in Indonesia

The Prospectus does not constitute an offer to sell nor a solicitation to buy securities in Indonesia.

Additional Information for investors with residence or seat in Italy

This document is considered for use solely by qualified investors and private professional clients (as defined in Article 26 (1) (b) and (d) of Consob Regulation No. 16190 dated 29 October 2007). If made available to Distributors and individuals authorized by Distributors to conduct promotion and marketing activity, it may only be used for the purpose for which it was conceived. The data and information contained in this document may not be used for communications with Supervisory Authorities. This document does not include any information to determine, in concrete terms, the investment inclination and, therefore, this document cannot and should not be the basis for making any investment decisions.

Additional Information for investors with residence or seat in Japan

This document is considered for use solely by qualified investors and is distributed by Robeco Japan Company Limited, registered in Japan as a Financial Instruments Business Operator, [registered No. the Director of Kanto Local Financial Bureau (Financial Instruments Business Operator), No. 2780, Member of Japan Investment Advisors Association].

Additional Information for investors with residence or seat in South Korea

The Management Company is not making any representation with respect to the eligibility of any recipients of the Prospectus to acquire the Shares therein under the laws of South Korea, including but not limited to the Foreign Exchange Transaction Act and Regulations thereunder. The Shares have not been registered under the Financial Investment Services and Capital Markets Act of Korea, and none of the Shares may be offered, sold or delivered, or offered or sold to any person for re-offering or resale, directly or indirectly, in South Korea or to any resident of South Korea except pursuant to applicable laws and regulations of South Korea.

Additional Information for investors with residence or seat in Liechtenstein

This document is exclusively distributed to Liechtenstein-based, duly licensed financial intermediaries (such as banks, discretionary portfolio managers, insurance companies, fund of funds) which do not intend to invest on their own account into Fund(s) displayed in the document. This material is distributed by Robeco Switzerland Ltd, postal address: Josefstrasse 218, 8005 Zurich, Switzerland. LGT Bank Ltd., Herrengasse 12, FL-9490 Vaduz, Liechtenstein acts as the representative and paying agent in Liechtenstein. The prospectus, the Key Investor Information Documents (KIIDs), the articles of association, the annual and semi-annual reports of the Fund(s) may be obtained from the representative or via the website.

Additional Information for investors with residence or seat in Malaysia

Generally, no offer or sale of the Shares is permitted in Malaysia unless where a Recognition Exemption or the Prospectus Exemption applies: NO ACTION HAS BEEN, OR WILL BE, TAKEN TO COMPLY WITH MALAYSIAN LAWS FOR MAKING AVAILABLE, OFFERING FOR SUBSCRIPTION OR PURCHASE, OR ISSUING ANY INVITATION TO SUBSCRIBE FOR OR PURCHASE OR SALE OF THE SHARES IN MALAYSIA OR TO PERSONS IN MALAYSIA AS THE SHARES ARE NOT INTENDED BY THE ISSUER TO BE MADE AVAILABLE, OR MADE THE SUBJECT OF ANY OFFER OR INVITATION TO SUBSCRIBE OR PURCHASE, IN MALAYSIA. NEITHER THIS DOCUMENT NOR ANY DOCUMENT OR OTHER MATERIAL IN CONNECTION WITH THE SHARES SHOULD BE DISTRIBUTED, CAUSED TO BE DISTRIBUTED OR CIRCULATED IN MALAYSIA. NO PERSON SHOULD MAKE AVAILABLE OR MAKE ANY INVITATION OR OFFER OR INVITATION TO SELL OR PURCHASE THE SHARES IN MALAYSIA UNLESS SUCH PERSON TAKES THE NECESSARY ACTION TO COMPLY WITH MALAYSIAN LAWS.

Additional Information for investors with residence or seat in Mexico

The funds have not been and will not be registered with the National Registry of Securities, maintained by the Mexican National Banking and Securities Commission and, as a result, may not be offered or sold publicly in Mexico. Robeco and any underwriter or purchaser may offer and sell the funds in Mexico on a private placement basis to Institutional and Accredited Investors, pursuant to Article 8 of the Mexican Securities Market Law.

Additional Information for investors with residence or seat in Peru

The Fund has not been registered with the Superintendencia del Mercado de Valores (SMV) and is being placed by means of a private offer. SMV has not reviewed the information provided to the investor. This document is only for the exclusive use of institutional investors in Peru and is not for public distribution.

Additional Information for investors with residence or seat in Shanghai

This material is prepared by Robeco Overseas Investment Fund Management (Shanghai) Limited Company ("Robeco Shanghai") and is only provided to the specific objects under the premise of confidentiality. Robeco Shanghai was registered as a private fund manager with the Asset Management Association of China in September 2018. Robeco Shanghai is a wholly foreign-owned enterprise established in accordance with the PRC laws, which enjoys independent civil rights and civil obligations. The statements of the shareholders or affiliates in the material shall not be deemed to a promise or guarantee of the shareholders or affiliates of Robeco Shanghai, or be deemed to any obligations or liabilities imposed to the shareholders or affiliates of Robeco Shanghai.

Additional Information for investors with residence or seat in Singapore

This document has not been registered with the Monetary Authority of Singapore ("MAS"). Accordingly, this document may not be circulated or distributed directly or indirectly to persons in Singapore other than (i) to an institutional investor under Section 304 of the SFA, (ii) to a relevant person pursuant to Section 305(1), or any person pursuant to Section 305(2), and in accordance with the conditions specified in Section 305, of the SFA, or (iii) otherwise pursuant to, and in accordance with the conditions of, any other applicable provision of the SFA. The contents of this document have not been reviewed by the MAS. Any decision to participate in the Fund should be made only after reviewing the sections regarding investment considerations, conflicts of interest, risk factors and the relevant Singapore selling restrictions (as described in the section entitled "Important Information for Singapore Investors") contained in the prospectus. Investors should consult your professional adviser if you are in doubt about the stringent restrictions applicable to the use of this document, regulatory status of the Fund, applicable regulatory protection, associated risks and suitability of the Fund to your objectives. Investors should note that only the Sub-Funds listed in the appendix to the section entitled "Important Information for Singapore Investors" of the prospectus ("Sub-Funds") are available to Singapore investors. The Sub-Funds are notified as restricted foreign schemes under the Securities and Futures Act, Chapter 289 of Singapore ("SFA") and invoke the exemptions from compliance with prospectus registration requirements pursuant to the exemptions under Section 304 and Section 305 of the SFA. The Sub-Funds are not authorized or recognized by the MAS and shares in the Sub-Funds are not allowed to be offered to the retail public in Singapore. The prospectus of the Fund is not a prospectus as defined in the SFA. Accordingly, statutory liability under the SFA in relation to the content of prospectuses does not apply. The Sub-Funds may only be promoted exclusively to persons who are sufficiently experienced and sophisticated to understand the risks involved in investing in such schemes, and who satisfy certain other criteria provided under Section 304, Section 305 or any other applicable provision of the SFA and the subsidiary legislation enacted thereunder. You should consider carefully whether the investment is suitable for you. Robeco Singapore Private Limited holds a capital markets services license for fund management issued by the MAS and is subject to certain clientele restrictions under such license.

Additional Information for investors with residence or seat in Spain

Robeco Institutional Asset Management B.V., Sucursal en España with identification number W0032687F and having its registered office in Madrid at Calle Serrano 47-14^º, is registered with the Spanish Commercial Registry in Madrid, in volume 19.957, page 190, section 8, sheet M-351927 and with the National Securities Market Commission (CNMV) in the Official Register of branches of European investment services companies, under number 24. The investment funds or SICAV mentioned in this document are regulated by the corresponding authorities of their country of origin and are registered in the Special Registry of the CNMV of Foreign Collective Investment Institutions marketed in Spain.

Additional Information for investors with residence or seat in South Africa

Robeco Institutional Asset Management B.V. is registered and regulated by the Financial Sector Conduct Authority in South Africa.

Additional Information for investors with residence or seat in Switzerland

The Fund(s) are domiciled in Luxembourg. This document is exclusively distributed in Switzerland to qualified investors as defined in the Swiss Collective Investment Schemes Act (CISA). This material is distributed by Robeco Switzerland Ltd, postal address: Josefstrasse 218, 8005 Zurich. ACOLIN Fund Services AG, postal address: Affolternstrasse 56, 8050 Zürich, acts as the Swiss representative of the Fund(s). UBS Switzerland AG, Bahnhofstrasse 45, 8001 Zurich, postal address: Europastrasse 2, P.O. Box, CH-8152 Opfikon, acts as the Swiss paying agent. The prospectus, the Key Investor Information Documents (KIIDs), the articles of association, the annual and semi-annual reports of the Fund(s), as well as the list of the purchases and sales which the Fund(s) has undertaken during the financial year, may be obtained, on simple request and free of charge, at the office of the Swiss representative ACOLIN Fund Services AG. The prospectuses are also available via the website.

Additional Information relating to RobecoSAM-branded funds/services

Robeco Switzerland Ltd, postal address Josefstrasse 218, 8005 Zurich, Switzerland has a license as asset manager of collective assets from the Swiss Financial Market Supervisory Authority FINMA. RobecoSAM-branded financial instruments and investment strategies referring to such financial instruments are generally managed by Robeco Switzerland Ltd. The RobecoSAM brand is a registered trademark of Robeco Holding B.V. The brand RobecoSAM is used to market services and products which entail Robeco's expertise on Sustainable Investing (SI). The brand RobecoSAM is not to be considered as a separate legal entity.

Additional Information for investors with residence or seat in Thailand

The Prospectus has not been approved by the Securities and Exchange Commission which takes no responsibility for its contents. No offer to the public to purchase the Shares will be made in Thailand and the Prospectus is intended to be read by the addressee only and must not be passed to, issued to, or shown to the public generally.

Additional Information for investors with residence or seat in the United Arab Emirates

Some Funds referred to in this marketing material have been registered with the UAE Securities and Commodities Authority (the Authority). Details of all Registered Funds can be found on the Authority's website. The Authority assumes no liability for the accuracy of the information set out in this material/document, nor for the failure of any persons engaged in the investment Fund in performing their duties and responsibilities.

Additional Information for investors with residence or seat in the United Kingdom

Robeco is subject to limited regulation in the UK by the Financial Conduct Authority. Details about the extent of our regulation by the Financial Conduct Authority are available from us on request.

Additional Information for investors with residence or seat in Uruguay

The sale of the Fund qualifies as a private placement pursuant to section 2 of Uruguayan law 18,627. The Fund must not be offered or sold to the public in Uruguay, except under circumstances which do not constitute a public offering or distribution under Uruguayan laws and regulations. The Fund is not and will not be registered with the Financial Services Superintendency of the Central Bank of Uruguay. The Fund corresponds to investment funds that are not investment funds regulated by Uruguayan law 16,774 dated September 27, 1996, as amended.