

INVEST IN A WORLD OF OPPORTUNITY

Robeco Global Stars Equities

RISK DISCLOSURES

INVESTMENT INVOLVES RISKS. The value of the Fund can be volatile and investors may not get back the full amount invested.

- Robeco Global Stars Equities (the "Fund") invests primarily in equities of companies all over the world, which mainly operate in mature economies (developed markets).
- The Fund is subject to equity investment risk, market risk, concentration risk, currency risk, risk of investing in financial derivative instruments and liquidity risk.
- The Fund may engage in securities lending transactions which may involve the risk that the recipient may fail to return the lent securities on the agreed date or furnish the requested additional collateral if required. This could result in losses and negatively impact the Fund's net asset value.
- Investor should not invest in the Fund solely based on the information provided in this document and should read the offering documents for details (including the risk factors).

KEY POINTS



Quality

The portfolio features only high-quality companies – those companies that can endure over time.



Balanced

Robeco Global Stars Equities has diversified exposure to leading companies in every major sector.



Long-term value creation

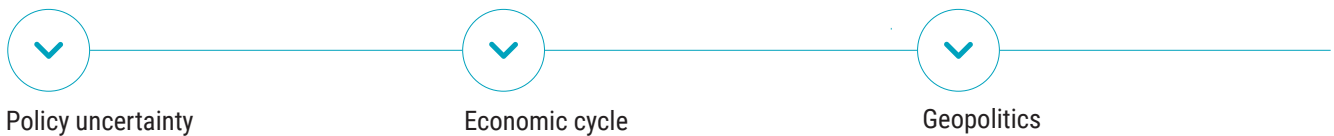
Robeco's experienced team has been managing the Robeco Global Stars Equities since 2011, navigating both rising and falling markets.

THE OPPORTUNITY

Robeco Global Stars Equities, a high-conviction global equity strategy, delivers the investment potential of a selection of the world's leading companies. It consists of a concentrated portfolio of 40 to 60 stocks which are chosen on the basis of high free cash flow, an attractive return on invested capital and a constructive sustainability profile. A core allocation to a balanced global equity strategy has the potential to capture growth and improve your risk-adjusted returns in the long term.

WHY GLOBAL EQUITIES?

Global uncertainty calls for a resilient investment strategy



THE TRENDS POWERING THE FUTURE

Artificial Intelligence, semiconductors, data analysis

GLP-1 drugs, next generation pharmaceuticals, consumer healthcare

Electric vehicles, energy, robotics, machinery, next generation power grids

Sustainable cities, data centers

Banks, insurance, fintech

Travel and tourism

OUR APPROACH

Finding the best stocks with our 3-pillar process



Financial quality
High Return on Invested Capital (ROIC)¹



Valuation quality
High free cash flow



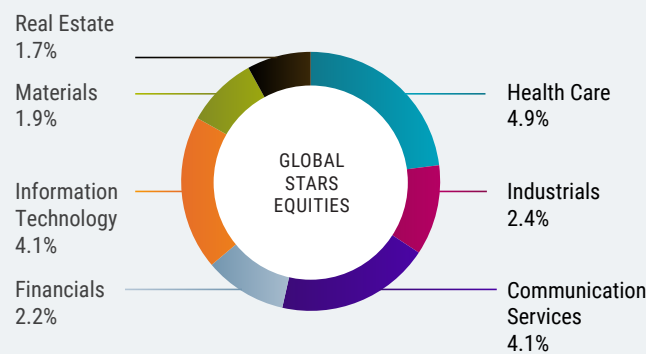
Sustainability quality
Material ESG factors & integrated valuation

1. Return on invested capital (ROIC) shows how efficiently a company uses its capital to generate profits.

A CORE PORTFOLIO DIVERSIFIED ACROSS SECTORS AND REGIONS

The top 10 active weights in Robeco Global Stars Equities

21.3% of the total portfolio capitalization, featuring seven sectors, 49% exposure to the US and 51% to the rest of the world.



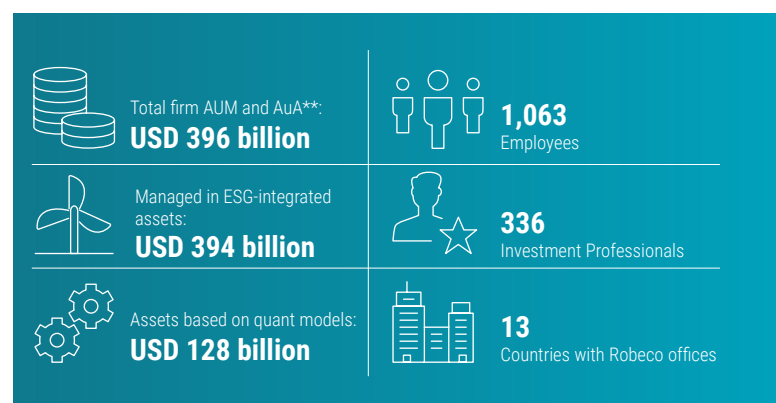
Source: Robeco, MSCI. Data end of January 2026. The top 10 active weights referred to are the top ten positions in Robeco Global Stars Equities (individual stocks) where the portfolio's allocations most exceed those of its benchmark index (MSCI World). For illustrative purposes only. This is the current overview as of the date stated above and not a guarantee of future developments. It should not be assumed that any investments in sectors identified were or will be profitable.

Fund data

Fund Manager	Michiel Plakman, CFA, Chris Berkouwer, CFA, Yanxin Liu, CFA,
Inception date (Fund)	10 November 2008
Inception date (DL USD)*	21 January 2020
Benchmark	MSCI World Index
Base Currency (Fund)	EUR
Asset Class	Equities
Dividend Paying	No

Source: Robeco. *Robeco Global Stars Equities DL USD, ISIN: LU2100416564.

About Robeco



**AUM refers to Assets Under Management and AuA refers to Assets Under Advice. Assets as of end December 2025, quant figures based on preliminary data. Personnel information as of end December 2025.

For avoidance of doubt, the Fund does not constitute a green/ESG fund pursuant to the Circular to management companies of SFC-authorized unit trusts and mutual funds – ESG funds issued by the SFC on 29 June 2021 (as amended from time to time).

Important information

Unless stated otherwise, Source: Robeco.

Investment involves risks. Past performance is not indicative of future performance. The value of investments may fluctuate. This document is for information only and does not constitute any investment advice or an offer or solicitation to buy or sell in any securities or to adopt any investment strategy. Investors should not base their investment decisions solely on the information provided in this document and are advised to seek independent advice (including advice on tax implications) before making any investment decisions. Investors should ensure they fully understand the risks associated with the Fund and should also consider their own investment objectives and risk tolerance level. Please refer to the relevant offering documents, including the Prospectus, Hong Kong Offering Document and the Key Facts Statement for the Fund, for further details including the risk factors. The investment returns are denominated in stated currency, which may be a foreign currency other than USD and HKD ("other foreign currency"). US/HK dollar-based investors are therefore exposed to fluctuations in the US/HK dollar / other foreign currency exchange rate. No assurance can be given that the investment objective of any investment products will be achieved. All data, estimates, opinions and other information provided are as of the date shown above and may change as market conditions evolve, and are subject to change without notice. Robeco accepts no liability for any direct, indirect, or consequential loss arising from the use of this material or any comments, opinions, or estimates contained herein.

Where a reference is made to the frequency of dividend distributions, this frequency is an aim and not a guarantee. Dividend yield is not guaranteed and is not indicative of the return of the Fund. The Fund may, at their discretion, pay dividends out of capital or capital gains. Distributions out of capital may result in the reduction of an investor's original capital invested in the Fund or from any capital gains attributable to that original investment of the Fund. Also, any distributions involving the capital and/or capital gains may result in an immediate reduction of the net asset value per share of the relevant class. Payment of dividends out of capital amounts to a return or withdrawal of part of an investor's original investment or from any capital gains attributable to that original investment. Please refer to Composition of the dividend payments document available at www.robeco.com.hk for details, including the explanatory notes.

Where applicable, investors holding accumulation shares of the Fund will not receive any distributions. Instead, the income due to them will be automatically reinvested and added to the Fund and will thus contribute to a further increase in the value of the total net assets.

Materials in this document may not be reproduced, distributed, or published without prior written permission from Robeco.

This document is issued by Robeco Hong Kong Limited and has not been reviewed by the Securities and Futures Commission of Hong Kong.