

## RobecoSAM Global SDG Engagement Equities D USD

RobecoSAM Global SDG Engagement Equities is an actively managed fund that invests in a concentrated selection of global stocks. Stock selection is based on fundamental analysis to invest in companies based on their contribution to the United Nations Sustainable Development Goals (UN SDGs). The fund will actively engage with the invested companies and initiate a dialogue to motivate these companies to improve their fulfilment of the UN SDGs over three to five years via active engagement. The portfolio is built on the basis of an eligible investment universe and an internally developed SDG framework for mapping and measuring SDG contributions (information can be obtained via the website [www.robeco.com/si](http://www.robeco.com/si)). The fund also aims to achieve a better return than the index.



**Michiel Plakman CFA, Daniela da Costa, Peter van der Werf**  
Fund manager since 06-07-2021

### Performance

	Fund	Index
1 m	1.42%	1.44%
3 m	0.67%	1.57%
Ytd	8.68%	8.85%
1 Year	-1.48%	2.06%
Since 07-2021	-9.14%	-3.72%

Annualized (for periods longer than one year)

Note: due to a difference in measurement period between the fund and the index, performance differences may arise. For further info, see last page.

### Calendar year performance

	Fund	Index
2022	-24.95%	-18.36%

Annualized (years)

### Index

MSCI All Country World Index (Net Return, USD)

### General facts

Type of fund	Equities
Currency	USD
Total size of fund	USD 1,349,021,145
Size of share class	USD 24,946
Outstanding shares	297
1st quotation date	06-07-2021
Close financial year	31-12
Ongoing charges	1.71%
Daily tradable	Yes
Dividend paid	No
Ex-ante tracking error limit	-
Management company	Robeco Institutional Asset Management B.V.
Management company	Robeco Institutional Asset Management B.V.

### Sustainability profile

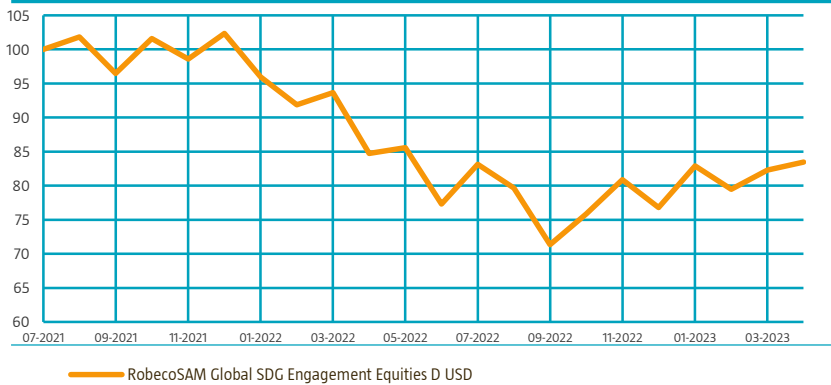
- Exclusions+
- ESG Integration
- Voting
- Target Universe

For more information on exclusions see <https://www.robeco.com/exclusions/>

For more information on target universe methodology see <https://www.robeco.com/si>

### Performance

Indexed value (until 30-04-2023) - Source: Robeco



### Performance

Based on transaction prices, the fund's return was 1.42%.

The portfolio had a neutral performance in April, and still is up nicely for the year, relative to the benchmark. During April, we had positive contributions from stock selection in consumer discretionary and healthcare, while stock selection in information technology made a negative attribution. Healthcare was mainly helped by a positive contribution from Novartis, while Sony and AutoZone supported performance in consumer discretionary. We also had a positive contribution in financials from BTG Pactual, which recovered nicely after a difficult start to the year. The main underperformer in information technology this month was STMicroelectronics, which posted strong results. However, investors are clearly more concerned with regard to automotive semiconductors, and STMicroelectronics therefore gave up some of its year-to-date gains during April.

### Market development

Never a dull moment in global equity markets, though this month's muted price action proved the opposite (flat in EUR, +2% in USD). Beneath the surface we have seen quite some stock dispersion on the back of 2023 first-quarter earnings results, with misses punished severely and only strong beats being rewarded. With over 50% of companies having reported thus far, it seemed most earnings reports did clear a low bar and backstopped markets for now after renewed macro and banking jitters from the previous month. Interestingly, many mega-cap tech and longer duration names continued their comeback, offsetting much of the damage from 'old economy' complexes that have been struggling year-to-date. Also, the strong performance of, for example, high-end luxury and conventional defensive stocks is concurrent, with an overall shift into quality pricing power plays and 'flight to safety'. Companies indeed sound cautious on demand and see cracks forming, with some seeing their all-time high backlog drying up rapidly, meaning less room for pricing from here onwards.

### Expectation of fund manager

Interestingly, Europe seems to have become a relative safe haven with the US facing more specific risks ahead, such as a large come down from massive Covid liquidity, risky commercial real estate, the regional banks saga, debt ceiling debates and continued political divisions. The valuation differential between both regions with the US on 18x forward earnings versus 12x for Europe, might argue in favor of Europe since a long time. Still, large issues at play in the US, such as a hard landing or a severe contraction in credit markets, undoubtedly spill over to Europe too, outweighing any modest tailwind it gets from China's reopening and current 'easy comps'. While we do not own a crystal ball showing interest rate pathways and where they might peak out, or even start to ease down, we do think it makes sense to see an extended pause in any rate movement at some point. The status quo is fragile and the flurry of data points do imply calmer rate markets and equity markets staying somewhat in limbo. This means investors like us continue to be comfortable with sticking around in the quality corner for longer.

### Top 10 largest positions

The largest position in the portfolio is STMicroelectronics, which we continue to like for its exposure to electric vehicles. The second-largest position in the fund is Sony Corp, which continues to execute well on its digital strategy, with regard to music, gaming and television and movie content. The third-largest position in the portfolio is Novartis, which is in the process of spinning off its generics business Sandoz, which could act as a catalyst to unlock value in the name. Adobe has also risen to one of the largest positions, as the name continues to perform well after a difficult 2022.

### Fund price

30-04-23	USD	83.99
High Ytd (02-02-23)	USD	84.93
Low Ytd (05-01-23)	USD	77.29

### Fees

Management fee	1.50%
Performance fee	None
Service fee	0.16%
Expected transaction costs	0.06%

### Legal status

Investment company with variable capital incorporated under Luxembourg law (SICAV)

Issue structure	Open-end
UCITS V	Yes
Share class	D USD

This fund is a subfund of Robeco Capital Growth Funds, SICAV.

### Registered in

Luxembourg, Singapore, Switzerland

### Currency policy

The fund is allowed to pursue an active currency policy to generate extra returns and can engage in currency hedging transactions.

### Risk management

Risk management is fully integrated into the investment process to ensure that positions always meet predefined guidelines.

### Dividend policy

The fund does not distribute dividend. The fund retains any income that is earned and so its entire performance is reflected in its share price.

### Fund codes

ISIN	LU2354272903
Bloomberg	ROSEEDU LX
Valoren	112654634

### Top 10 largest positions

#### Holdings

Sony Group Corp
Apple Inc
Novartis AG
STMicroelectronics NV
Adobe Inc
Samsung Electronics Co Ltd
Amgen Inc
United Parcel Service Inc
Alphabet Inc (Class A)
Neste Oyj
<b>Total</b>

	Sector	%
	Household Durables	5.98
	Technology Hardware, Storage & Peripherals	5.32
	Pharmaceuticals	4.90
	Semiconductors & Semiconductor Equipment	4.51
	Software	3.78
	Technology Hardware, Storage & Peripherals	3.65
	Biotechnology	3.55
	Air Freight & Logistics	3.27
	Interactive Media & Services	3.24
	Oil, Gas & Consumable Fuels	3.00
	<b>Total</b>	<b>41.19</b>

### Top 10/20/30 weights

TOP 10	41.19%
TOP 20	68.40%
TOP 30	88.85%

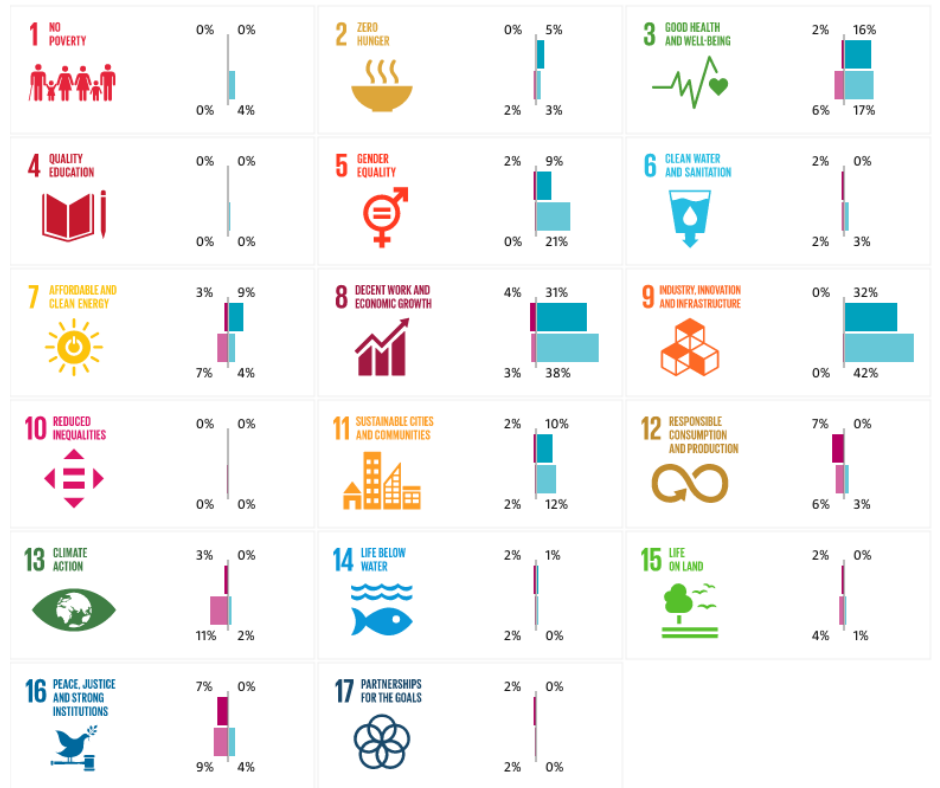
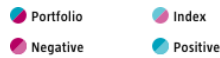
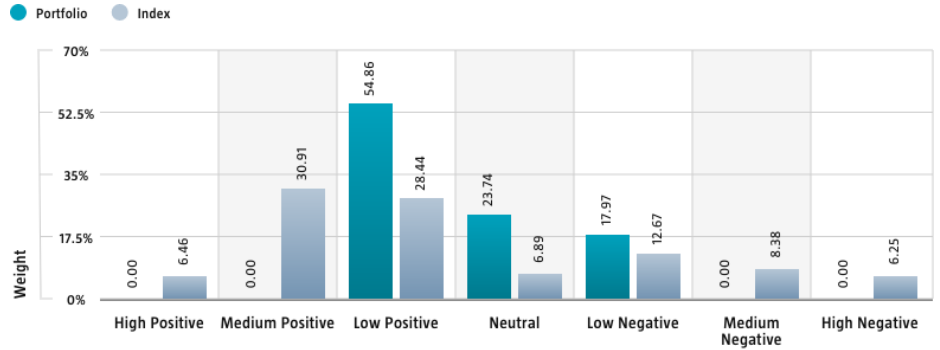
### Sustainability

The fund incorporates sustainability in the investment process by the means of a target universe, exclusions, ESG integration and engagement. The fund solely invests in stocks issued by companies with a low negative to low positive impact on the SDGs. The impact of issuers on the SDGs is determined by applying Robeco's internally developed three-step SDG Framework. The outcome is a quantified contribution expressed as an SDG score, considering both the contribution to the SDGs (positive, neutral or negative) and the extent of this contribution (high, medium or low). The fund actively engages with 100% of the corporate holdings typically for a period of three to five years. The fund does not invest in stock issuers that are in breach of international norms or where activities have been deemed detrimental to society following Robeco's exclusion policy. Financially material ESG factors are integrated in the bottom-up fundamental investment analysis to assess existing and potential ESG risks and opportunities. In addition, where a stock issuer is flagged for breaching international standards in the ongoing monitoring, the issuer will become subject to exclusion. Lastly, the fund makes use of shareholder rights and applies proxy voting in accordance with Robeco's proxy voting policy.

### SDG Impact Alignment

This distribution across SDG scores shows the portfolio weight allocated to companies with a positive, negative and neutral impact alignment with the Sustainable Development Goals (SDG) based on Robeco's SDG Framework. The framework, which utilizes a three-step approach to assess a company's impact alignment with the relevant SDGs, provides a methodology for assigning companies with an SDG score. The score ranges from positive to negative impact alignment with levels from high, medium or low impact alignment. This results in a 7-step scale from -3 to +3. If the data set does not cover the full portfolio, the figures shown above each impact level sum to the coverage level to reflect the data coverage of the portfolio, with minimal deviations that reflect rounding. Weights < 0.5% will show as 0. If an index has been selected, the same figures are also provided for the index.

Holdings mapped as corporates and/or sovereign are included in the figures.  
For more information, please visit <https://www.robeco.com/docm/docu-brochure-robecosam-sdg-framework.pdf>



### Asset Allocation

Asset allocation		
Equity		96.4%
Cash		3.6%

### Sector allocation

We do not aim to have large deviations on a sector level. There are sectors where the SDG scores tend to be higher (such as for instance in healthcare). In those sectors it may be harder to find candidates for the fund. We are underweight in energy and utilities, because in these sectors it is hard to find candidates that fit the purpose of the fund.

Sector allocation		Deviation index	
Technology Hardware, Storage & Peripherals	9.0%		3.7%
Capital Markets	6.9%		4.2%
Interactive Media & Services	6.0%		2.4%
Household Durables	6.0%		5.4%
Pharmaceuticals	5.9%		0.8%
Oil, Gas & Consumable Fuels	5.7%		0.9%
Software	5.6%		-0.8%
Multiline Retail	5.1%		2.7%
Semiconductors & Semiconductor Equipment	4.5%		-0.8%
Machinery	4.1%		2.2%
Specialty Retail	3.9%		2.3%
Biotechnology	3.5%		1.7%
Other	33.9%		-24.3%

### Regional allocation

We have an overweight in Europe and in emerging markets, and are slightly underweight in North America. The regional deviations are largely the effect of bottom-up stock picking.

Regional allocation		Deviation index	
America	56.9%		-7.5%
Europe	29.6%		12.2%
Asia	11.7%		-5.1%
Africa	1.7%		1.3%
Middle East	0.0%		-1.0%

### Currency allocation

We use currency hedging only selectively to hedge currencies back to the benchmark. We aim to have our performance attribution come from bottom-up stock picking and less so from sector allocation.

Currency allocation		Deviation index	
U.S. Dollar	61.1%		0.3%
Euro	15.1%		6.3%
Japanese Yen	7.8%		2.4%
Swiss Franc	4.7%		2.1%
Swedish Kroner	4.0%		3.1%
Pound Sterling	2.2%		-1.7%
Canadian Dollar	1.9%		-1.1%
Hungarian Forint	1.4%		1.4%
Norwegian Kroner	1.3%		1.1%
Mexico New Peso	0.2%		-0.1%
Brasilian Real	0.2%		-0.3%
South African Rand	0.1%		-0.3%
Other	0.0%		-13.1%

## Investment policy

RobecoSAM Global SDG Engagement Equities is an actively managed fund that invests in stocks all over the world. The selection of these stocks is based on fundamental analysis. The fund has sustainable investment as its objective within the meaning of Article 9 of the European Sustainable Finance Disclosure Regulation. The fund invests in companies that are able to have a clear and measurable improvement in their contribution to the United Nations Sustainable Development Goals (UN SDGs) over three to five years via active engagement. The fund integrates ESG (Environmental, Social and Governance) factors in the investment process and applies Robeco's Good Governance policy. The fund applies sustainability indicators, including but not limited to, normative, activity-based and region-based exclusions, and applies proxy voting and engagement. The fund also aims to provide long term capital growth. The portfolio is built on the basis of the eligible investment universe and an internally developed SDGs framework for mapping and measuring SDG contributions, about which more information can be obtained via the website [www.robeco.com/si](http://www.robeco.com/si). The fund has a concentrated portfolio of stocks with the highest potential value growth.

## Fund manager's CV

Michiel Plakman is Lead Portfolio Manager and member of the Global Equity team. He is responsible for fundamental global equities with a focus on SDG investing and on companies in information technology, real estate and portfolio construction. He has been in this role since 2009. Previously, he was responsible for managing the Robeco IT Equities fund within the TMT team. Prior to joining Robeco in 1999, he worked as a Portfolio Manager Japan at Achmea Global Investors (PVF Pensioen). From 1995 to 1996 he was Portfolio Manager European Equities at KPN Pension Fund. He holds a Master's in Econometrics from Vrije Universiteit Amsterdam and he is a CFA® charterholder. Daniela da Costa is responsible for the team's investments in Brazil and the African consumer sector. Prior to joining Robeco in 2010, she was Portfolio Manager Latin American Equities at Nomura in London. Before that, Daniela worked at HSBC and with the Petrobras pension fund in Brazil. She started her career in the industry in 1997. Daniela holds a Master's in Economics from the Brazilian Capital Markets Institute in Rio de Janeiro (IBMEC-RJ) and a MBA certificate in pension fund asset management from the Federal University of Rio de Janeiro (COPPE-UFRJ). She is board member of AMEC, the Brazilian stewardship agency and a member of Robeco's SDG committee and Biodiversity Task Force. Peter van der Werf is Manager Engagement at Robeco. He leads the corporate and sovereign engagement program in the Active Ownership team and is involved in further integration of active ownership in Robeco's investment products. With his engagement work he has challenged sustainability leadership at more than 200 global companies to align their environmental and social strategy with Robeco's sustainable investing philosophy. As Portfolio Manager SDG Engagement Equities, Peter contributes to impact investing in listed equity. He is also an Advisory Board member of the Finance for Biodiversity foundation. Peter started his career in 2007 and holds a Master's in Environmental Sciences from Wageningen University.

## Fiscal product treatment

The fund is established in Luxembourg and is subject to the Luxembourg tax laws and regulations. The fund is not liable to pay any corporation, income, dividend or capital gains tax in Luxembourg. The fund is subject to an annual subscription tax ("tax d'abonnement") in Luxembourg, which amounts to 0.05% of the net asset value of the fund. This tax is included in the net asset value of the fund. The fund can in principle use the Luxembourg treaty network to partially recover any withholding tax on its income.

## Fiscal treatment of investor

The fiscal consequences of investing in this fund depend on the investor's personal situation. For private investors in the Netherlands real interest and dividend income or capital gains received on their investments are not relevant for tax purposes. Each year investors pay income tax on the value of their net assets as at 1 January if and inasmuch as such net assets exceed the investor's tax-free allowance. Any amount invested in the fund forms part of the investor's net assets. Private investors who are resident outside the Netherlands will not be taxed in the Netherlands on their investments in the fund. However, such investors may be taxed in their country of residence on any income from an investment in this fund based on the applicable national fiscal laws. Other fiscal rules apply to legal entities or professional investors. We advise investors to consult their financial or tax adviser about the tax consequences of an investment in this fund in their specific circumstances before deciding to invest in the fund.

## MSCI disclaimer

Source MSCI. MSCI makes no express or implied warranties or representations and shall have no liability whatsoever with respect to any MSCI data contained herein. The MSCI data may not be further redistributed or used as a basis for other indices or any securities or financial products. This report is not approved, endorsed, reviewed or produced by MSCI. None of the MSCI data is intended to constitute investment advice or a recommendation to make (or refrain from making) any kind of investment decision and may not be relied on as such.

## Morningstar

Copyright © Morningstar Benelux. All Rights Reserved. The information contained herein: (1) is proprietary to Morningstar and/or its content providers; (2) may not be copied or distributed; and (3) is not warranted to be accurate, complete or timely. Neither Morningstar nor its content providers are responsible for any damages or losses arising from any use of this information. Past performance is no guarantee of future results. For more information on Morningstar, please refer to [www.morningstar.com](http://www.morningstar.com)

## Disclaimer

Source: Robeco. As of 30-04-2023, NAV to NAV in denominated currency of the respective share class with dividends re-invested. The performance figures are calculated starting from the first quotation date. ©2023 Morningstar. All Rights Reserved. The information contained here in: (1) is proprietary to Morningstar and/or its content providers; (2) may not be copied or distributed; and (3) is not warranted to be accurate, complete or timely by Morningstar. Neither Morningstar nor its content providers are responsible for any damages or losses arising from any use of this information. Past performance is no indication of current or future performance.

This document is not intended as a recommendation or for the purpose of soliciting any action in relation to the Robeco Capital Growth Funds ("Fund") and should not be construed as an offer to sell shares of the Fund (the "Shares") or solicitation by anyone in any jurisdiction in which such an offer or solicitation is not authorised or to any person to whom it is unlawful to make such an offer and solicitation. While all the information prepared in this document is believed to be accurate, the directors of the Fund and its investment manager makes no representation or warranty, whether express or implied, as to the completeness, reliability or accuracy, nor can it accept responsibility for errors appearing in the document. This document does not constitute any recommendation regarding any securities, futures, derivatives or other investment products. Nothing in this document constitutes accounting, legal, regulatory, tax or other advice. Any decision to subscribe for interests in the Fund must be made solely on the basis of information contained in the prospectus (the "Prospectus"), which information may be different from the information contained in this document, and with independent analyses of your investment and financial situation and objectives. The information contained in this document is qualified in its entirety by reference to the Prospectus, and this document should, at all times, be read in conjunction with the Prospectus. Detailed information on the Fund and associated risks is contained in the Prospectus. Any decision to participate in the Fund should be made only after reviewing the sections regarding investment considerations, conflicts of interest, risk factors and the relevant Singapore selling restrictions (as described in the section entitled "Important Information for Singapore Investors") contained in the Prospectus. You should consult your professional adviser if you are in doubt about the stringent restrictions applicable to the use of this document, regulatory status of the Fund, applicable regulatory protection, associated risks and suitability of the Fund to your objectives. This document is not directed to, or intended for distribution to or use by, any person or entity who is a citizen or resident of or located in any locality, state, country or other jurisdiction where such distribution, publication, availability or use would be contrary to law or regulation or which would subject the Fund and its investment manager to any registration or licensing requirement within such jurisdiction. Investors should note that only the sub-funds listed in the appendix to the section entitled "Important Information for Singapore Investors" of the Prospectus (the "Sub-Funds") are available to Singapore investors. The Sub-Funds are notified as restricted foreign schemes under the Securities and Futures Act, Chapter 289 of Singapore ("SFA") and are invoking the exemptions from compliance with prospectus registration requirements pursuant to the exemptions under Section 304 and Section 305 of the SFA. The Sub-Funds are not authorised or recognised by the Monetary Authority of Singapore and Shares in the Sub-Funds are not allowed to be offered to the retail public in Singapore. The Prospectus of the Fund is not a prospectus as defined in the SFA. Accordingly, statutory liability under the SFA in relation to the content of prospectuses would not apply. The Sub-Funds may only be promoted exclusively to persons who are sufficiently experienced and sophisticated to understand the risks involved in investing in such schemes, and who satisfy certain other criteria provided under Section 304, Section 305 or any other applicable provision of the SFA and the subsidiary legislation enacted thereunder. You should consider carefully whether the investment is suitable for you. This document may contain projections or other forward looking statements regarding future events or future financial performance of countries, markets or companies and such projection or forecast is not indicative of the future or likely performance of the Fund. Neither the Fund, its investment manager nor any of their associates, nor any director, officer or employee accepts any liability whatsoever for any loss arising directly or indirectly from the use of this document. The information contained in this document, including any data, projections and underlying assumptions are based upon certain assumptions, management forecasts and analysis of information available as at the date of this document and reflects prevailing conditions and our views as of the date of the document, all of which are accordingly subject to change at any time without notice and the Fund and its investment manager are under no obligation to notify you of any of these changes. Prospective investors should not view the past performance of the Fund or its investment manager as indicative of future results.