

RobecoSAM Euro SDG Credits IH CHF

RobecoSAM Euro SDG Credits is an actively managed fund and provides a diversified exposure to the Euro investment grade credit market. The selection of these bonds is based on fundamental analysis. The fund's objective is to provide long term capital growth. The fund advances the UN Sustainable Development Goals (SDGs) by investing in companies whose business models and operational practices are aligned with targets defined by the 17 UN SDGs. The portfolio is built on the basis of the eligible investment universe and the relevant SDGs using an internally developed framework about which more information can be obtained via the website www.robeco.com/si. The fund can take some off-benchmark positioning in emerging markets, covered bonds and a limited exposure to high yield bonds.



Peter Kwaak, Jan Willem de Moor
Fund manager since 18-05-2010

Performance

	Fund	Index
1 m	0.39%	0.54%
3 m	-0.41%	-0.20%
Ytd	1.39%	1.91%
1 Year	-5.05%	-5.26%
2 Years	-6.67%	-6.65%
3 Years	-3.00%	-3.04%
5 Years	-1.49%	-1.52%
Since 04-2016	-0.67%	-0.70%

Annualized (for periods longer than one year)

Note: due to a difference in measurement period between the fund and the index, performance differences may arise. For further info, see last page.

Calendar year performance

	Fund	Index
2022	-13.48%	-14.09%
2021	-1.65%	-1.20%
2020	3.13%	2.44%
2019	5.59%	5.79%
2018	-1.94%	-1.67%
2020-2022	-4.26%	-4.56%
2018-2022	-1.90%	-1.99%

Annualized (years)

Index

Bloomberg Euro Aggregate: Corporates

General facts

Type of fund	Bonds
Currency	CHF
Total size of fund	CHF 1,067,917,870
Size of share class	CHF 27,559,699
Outstanding shares	287,768
1st quotation date	21-04-2016
Close financial year	31-12
Ongoing charges	0.49%
Daily tradable	Yes
Dividend paid	No
Ex-ante tracking error limit	2.50%
Management company	Robeco Institutional Asset Management B.V.
Management company	Robeco Institutional Asset Management B.V.

Sustainability profile

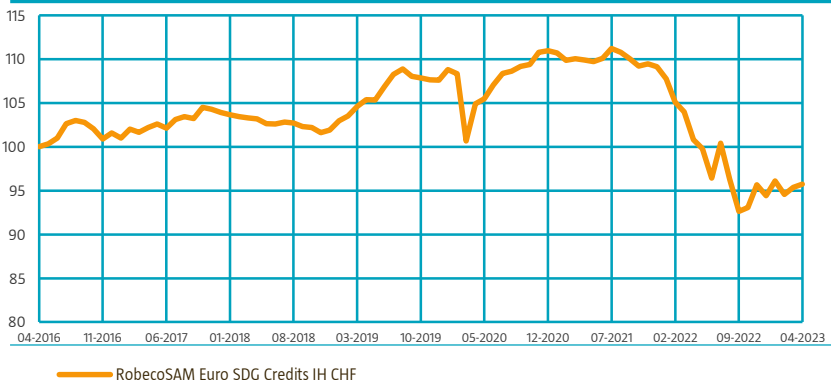
- Exclusions+
- ESG Integration
- Target Universe



For more information on exclusions see <https://www.robeco.com/exclusions/>
For more information on target universe methodology see <https://www.robeco.com/si>

Performance

Indexed value (until 30-04-2023) - Source: Robeco



Performance

Based on transaction prices, the fund's return was 0.39%.

This return was driven by a decline in credit spreads: the average index spread ended the month at 162 basis points, 7 basis points tighter than at the end of March. Spreads reached an intra-month low at 154 basis points in mid-April, after which spreads widened in the last weeks of the month. The index excess return of corporate bonds over underlying government bonds was positive, at 0.5%. The performance of the underlying portfolio, measured gross of fees, was worse than that of the index. The portfolio had a beta overweight position during the month, which contributed positively. Unfortunately, the positive beta contribution was more than offset by a negative contribution from issuer selection. On a sector level, the underweight in real estate and the overweight in banking were both negative drivers. Although the contagion from the problems at banks in the US was limited, European bank paper still underperformed the broader market. On an individual name level, the largest positive contributors were the overweights in Vonovia and Commerzbank. The largest negative contributions were from the positions in Deutsche Bank, Rabobank, NIBC Bank and Westlake.

Market development

Financial markets were relatively calm in April, though spreads widened in the second half of the month. Problems in the US regional banking sector continued to pop up. First Republic Bank, which is mainly active in the market for wealthy clients, was the latest victim. The bank faces similar issues as other regional banks, with large unrealized losses on "assets held to maturity". In March, a group of larger US banks provided USD 30 bln of uninsured deposits to this bank to shore up liquidity. This did not turn the tide and the bank was finally acquired by JPMorgan. There was not much spillover of this stress at US regional banks to the European banking sector. The specific issues of deposit outflows and large exposures to commercial real estate are mostly a phenomenon for smaller US banks. The publication of first-quarter earnings by European banks demonstrated that the sector is in good health and that profitability is improving as a result of the more attractive interest rate environment. One European sector that continues to be under pressure as a result of higher interest rates is the real estate sector. We continue to underweight this sector.

Expectation of fund manager

Central banks have been experimenting with monetary policy for many years now. The economic system created debt in all corners of society. A fast and aggressive hiking cycle will reveal many problems, not just at Silicon Valley Bank. A recession could start somewhere toward the end of the year – and we believe central banks will cause one. Recent developments in the banking sector will lead to a further tightening of lending standards, which will put additional pressure on the economy. Our concern is with leveraged sectors that are interest rate sensitive like real estate. We have increased our overweight beta position during March. Valuations had improved after the spread widening, especially in the financial sector. We are far enough into the business and rate cycle that when markets become too bearish, buying on the dip makes sense. This time, the sell-off in bank Tier-1 CoCos and subordinated financials led to a buying opportunity in those segments. Valuations for non-financials are relatively less attractive and valuations for cyclicals are not fully reflecting recession risks at the moment.

Top 10 largest positions

The three largest positions are in financials. The exposure to banks was increased during the month. Often, we have more than one bond holding in a specific name.

Fund price

30-04-23	CHF	95.37
High Ytd (02-02-23)	CHF	97.12
Low Ytd (02-03-23)	CHF	93.80

Fees

Management fee	0.35%
Performance fee	None
Service fee	0.12%
Expected transaction costs	0.14%

Legal status

Investment company with variable capital incorporated under Luxembourg law (SICAV)	
Issue structure	Open-end
UCITS V	Yes
Share class	IH CHF
This fund is a subfund of Robeco Capital Growth Funds, SICAV	

Registered in

Austria, Germany, Luxembourg, Switzerland

Currency policy

All currency risks are hedged.

Risk management

Risk management is fully embedded in the investment process to ensure that positions always meet predefined guidelines.

Dividend policy

The fund does not distribute dividend. The fund retains any income that is earned and so its entire performance is reflected in its share price.

Derivative policy

RobecoSAM Euro SDG Credits make use of derivatives for hedging purposes as well as for investment purposes. These derivatives are very liquid.

Fund codes

ISIN	LU1395477489
Bloomberg	ROBSIHC LX
Sedol	BZ1BY59
WKN	A2AH68
Valoren	32234037

Top 10 largest positions

Holdings

NN Group NV
BNP Paribas SA
HSBC Holdings PLC
Nestle Finance International Ltd
Deutsche Bank AG
CaixaBank SA
Banque Federative du Credit Mutuel SA
Banco Santander SA
Erste Group Bank AG
Santander UK Group Holdings PLC
Total

Sector	%
Financials	2.27
Financials	2.14
Financials	2.04
Industrials	1.94
Financials	1.87
Financials	1.83
Financials	1.81
Financials	1.75
Financials	1.56
Financials	1.52
Total	18.74

Statistics

	3 Years	5 Years
Tracking error ex-post (%)	0.71	0.67
Information ratio	0.70	0.74
Sharpe ratio	-0.37	-0.09
Alpha (%)	0.49	0.52
Beta	0.99	1.01
Standard deviation	6.05	6.17
Max. monthly gain (%)	4.16	4.32
Max. monthly loss (%)	-4.03	-7.10

Above mentioned ratios are based on gross of fees returns.

Hit ratio

	3 Years	5 Years
Months outperformance	22	37
Hit ratio (%)	61.1	61.7
Months Bull market	18	29
Months outperformance Bull	11	17
Hit ratio Bull (%)	61.1	58.6
Months Bear market	18	31
Months Outperformance Bear	11	20
Hit ratio Bear (%)	61.1	64.5

Above mentioned ratios are based on gross of fees returns.

Characteristics

	Fund	Index
Rating	A2/A3	A3/BAA1
Option Adjusted Modified Duration (years)	4.5	4.5
Maturity (years)	4.7	5.0
Yield to Worst (% , Hedged)	2.6	2.4
Green Bonds (% , Weighted)	15.9	10.7

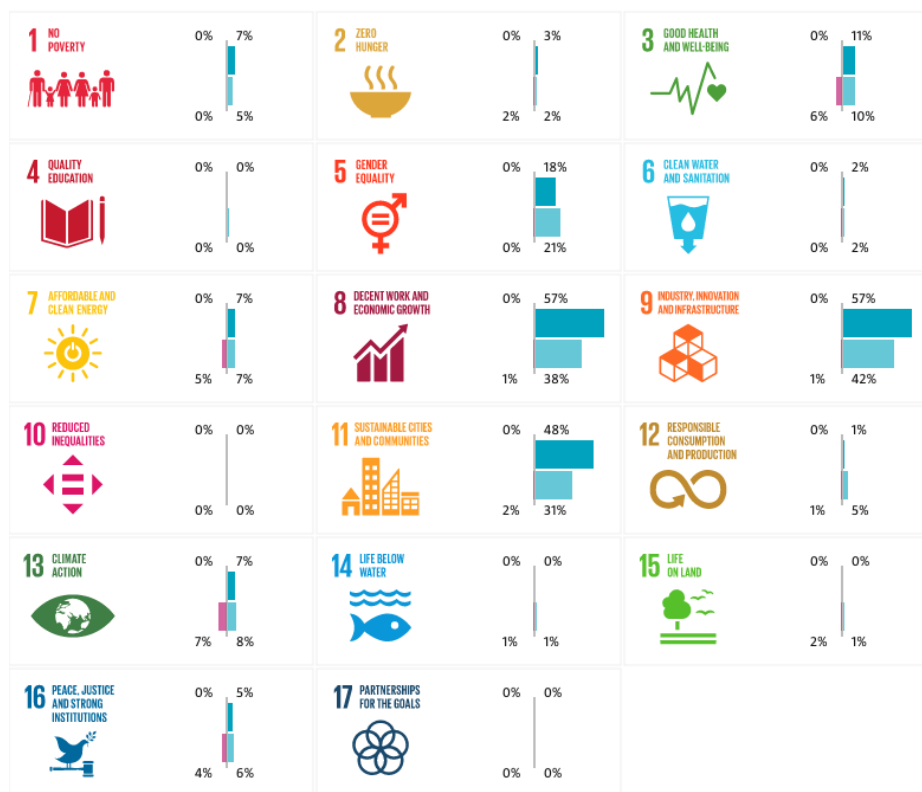
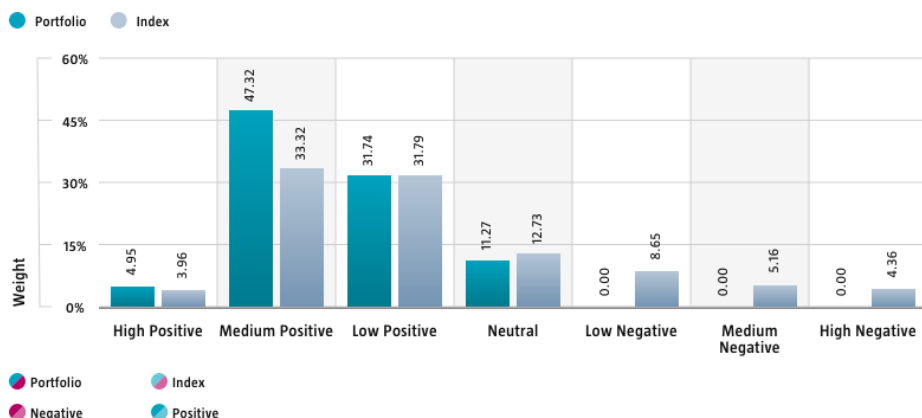
Sustainability

Sustainability is incorporated in the investment process by the means of a target universe, exclusions, ESG integration, and a minimum allocation to ESG-labeled bonds. The fund solely invests in credits issued by companies with a positive or neutral impact on the SDGs. The impact of issuers on the SDGs is determined by applying Robeco's internally developed three-step SDG Framework. The outcome is a quantified contribution expressed as an SDG score, considering both the contribution to the SDGs (positive, neutral or negative) and the extent of this contribution (high, medium or low). In addition, the fund does not invest in credit issuers that are in breach of international norms or where activities have been deemed detrimental to society following Robeco's exclusion policy. ESG factors are integrated in the bottom-up security analysis to assess the impact of financially material ESG risk on the issuer's fundamental credit quality. Furthermore, the fund invests at least 10% in green, social, sustainable, and/or sustainability-linked bonds. Lastly, where a credit issuer is flagged for breaching international standards in the ongoing monitoring, the issuer will become subject to exclusion.

SDG Impact Alignment

This distribution across SDG scores shows the portfolio weight allocated to companies with a positive, negative and neutral impact alignment with the Sustainable Development Goals (SDG) based on Robeco's SDG Framework. The framework, which utilizes a three-step approach to assess a company's impact alignment with the relevant SDGs, provides a methodology for assigning companies with an SDG score. The score ranges from positive to negative impact alignment with levels from high, medium or low impact alignment. This results in a 7-step scale from -3 to +3. If the data set does not cover the full portfolio, the figures shown above each impact level sum to the coverage level to reflect the data coverage of the portfolio, with minimal deviations that reflect rounding. Weights < 0.5% will show as 0. If an index has been selected, the same figures are also provided for the index.

For more information, please visit <https://www.robeco.com/docm/docu-brochure-robecosam-sdg-framework.pdf>



Sector allocation

In our portfolio management, we not only factor in weights, but also spreads and durations (DTS). On that basis, we are overweight in financials and underweight in non-financials. The overweight in financials is mainly located in the banking sector, while the real estate sector is an underweight.

Sector allocation		Deviation index
Financials	51.3%	7.5%
Industrials	26.6%	-21.7%
Covered	8.7%	8.7%
Utilities	5.5%	-2.4%
Agencies	2.7%	2.7%
Treasuries	1.8%	1.8%
Cash and other instruments	3.4%	3.4%

Duration allocation

The intention of the fund is to have a duration position that is neutral against its benchmark.

Duration allocation		Deviation index
Euro	4.5	0.0

Rating allocation

We have no clear preference for specific rating buckets. Our positioning over the different buckets is therefore the result of beta positioning, sector themes and issuer selection.

Rating allocation		Deviation index
AAA	9.6%	9.3%
AA	9.4%	2.3%
A	30.3%	-11.4%
BAA	42.0%	-9.0%
BA	5.3%	5.3%
Cash and other instruments	3.4%	3.4%

Subordination allocation

In the banking sector, we like both senior and subordinated debt, including Tier-1 and Tier-2 capital. The absolute weight in Additional Tier-1 bank CoCos was increased from 0.8% to 2.6% at the start of March. For some corporates in the core European countries, there is an attractive spread pickup available by moving from senior debt into corporate hybrids.

Subordination type allocation		Deviation index
Senior	76.6%	-14.0%
Tier 2	13.0%	6.8%
Hybrid	4.5%	1.5%
Tier 1	2.6%	2.5%
Cash and other instruments	3.4%	3.4%

Investment policy

RobecoSAM Euro SDG Credits is an actively managed fund and provides a diversified exposure to the Euro investment grade credit market. The selection of these bonds is based on fundamental analysis. The fund has sustainable investment as its objective within the meaning of Article 9 of the European Sustainable Finance Disclosure Regulation. The fund advances the UN Sustainable Development Goals (SDGs) by investing in companies whose business models and operational practices are aligned with targets defined by the 17 UN SDGs. The fund integrates ESG (Environmental, Social and Governance) factors in the investment process, applies Robeco's Good Governance policy. The fund applies sustainability indicators, including but not limited to normative, activity-based and region-based exclusions. The fund's objective is to provide long term capital growth. The portfolio is built on the basis of the eligible investment universe and the relevant SDGs using an internally developed framework about which more information can be obtained via the website www.robeco.com/si. The fund can take some off-benchmark positioning in emerging markets, covered bonds and a limited exposure to high yield bonds. The majority of bonds selected will be components of the Benchmark, but bonds outside the Benchmark may be selected too. The fund can deviate substantially from the weightings of the Benchmark. The fund aims to outperform the Benchmark over the long run, whilst still controlling relative risk through the applications of limits (on currencies and issuers) to the extent of deviation from the Benchmark. This will consequently limit the deviation of the performance relative to the Benchmark. The Benchmark is a broad market weighted index that is not consistent with the sustainable objective of the fund.

Fund manager's CV

Peter Kwaak is Portfolio Manager Investment Grade in the Credit team. Prior to joining Robeco in 2005, he was Portfolio Manager Credits at Aegon Asset Management for three years and at NIB Capital for two years. Peter has been active in the industry since 1998. He holds a Master's in Economics from Erasmus University Rotterdam and he is a CFA® charterholder. Jan Willem de Moor is Co-Head Portfolio Management Investment Grade in the Credit team. Prior to joining Robeco in 2005, he worked at the Dutch Medical professionals' pension fund as an Equity Portfolio Manager and at SNS Asset Management as an Equity Portfolio Manager. Jan Willem has been active in the industry since 1994. He holds a Master's in Economics from Tilburg University.

Team info

The RobecoSAM Euro SDG Credits fund is managed within Robeco's credit team, which consists of nine portfolio managers and twenty-three credit analysts (of which four financial analysts). The portfolio managers are responsible for the construction and management of the credit portfolios, whereas the analysts cover the team's fundamental research. Our analysts have long term experience in their respective sectors which they cover globally. Each analyst covers both investment grade and high yield, providing them an information advantage and benefiting from inefficiencies that traditionally exist between the two segmented markets. Furthermore, the credit team is supported by dedicated quantitative researchers and fixed income traders. On average, the members of the credit team have an experience in the asset management industry of seventeen years, of which eight years with Robeco.

Fiscal product treatment

The fund is established in Luxembourg and is subject to the Luxembourg tax laws and regulations. The fund is not liable to pay any corporation, income, dividend or capital gains tax in Luxembourg. The fund is subject to an annual subscription tax ('tax d'abonnement') in Luxembourg, which amounts to 0.01% of the net asset value of the fund. This tax is included in the net asset value of the fund. The fund can in principle use the Luxembourg treaty network to partially recover any withholding tax on its income.

Morningstar

Copyright © Morningstar Benelux. All Rights Reserved. The information contained herein: (1) is proprietary to Morningstar and/or its content providers; (2) may not be copied or distributed; and (3) is not warranted to be accurate, complete or timely. Neither Morningstar nor its content providers are responsible for any damages or losses arising from any use of this information. Past performance is no guarantee of future results. For more information on Morningstar, please refer to www.morningstar.com

Febelfin disclaimer

The fact that the sub-fund has obtained this label does not mean that it meets your personal sustainability goals or that the label is in line with requirements arising from any future national or European rules. The label obtained is valid for one year and subject to annual reappraisal. For further information on this label, please visit www.towardsustainability.be.



Disclaimer

This document is exclusively distributed in Switzerland to qualified investors as such terms are defined under the Swiss Collective Investment Schemes Act (CISA) by ACOLIN Fund Services AG which is authorized by the Swiss Financial Market Supervisory Authority FINMA as Swiss representative of the Fund(s) and UBS Switzerland AG, Bahnhofstrasse 45, 8001 Zürich, postal address: Europastrasse 2, P.O. Box, CH-8152 Opfikon, as Swiss paying agent. The Prospectus, the Key Information Documents (PRIIPS), the Articles of Association, the annual and semi-annual reports of the Fund(s), as well as the list of the purchases and sales which the Fund(s) has undertaken during the financial year, may be obtained, on simple request and free of charge, at the head office of the Swiss representative ACOLIN Fund Services AG, Leutschenbachstrasse 50, CH-8050 Zürich, Switzerland. If the currency in which the past performance is displayed differs from the currency of the country in which you reside, then you should be aware that due to exchange rate fluctuations the performance shown may increase or decrease if converted into your local currency. The value of the investments may fluctuate. Past performance is no guarantee of future results. The performance data do not take account of the commissions and costs incurred on the issue and redemption of units. Unless otherwise stated, performances are i) net of fees based on transaction prices and ii) with dividends reinvested. Please refer to the prospectus of the funds for further details. The prospectus can be obtained free of charge from the representative and are available. The ongoing charges mentioned in this publication is the one stated in the fund's latest annual report at closing date of the last calendar year. The material and information in this document are provided "as is" and without warranties of any kind, either expressed or implied. ACOLIN Fund Services AG and its related, affiliated and subsidiary companies disclaim all warranties, expressed or implied, including, but not limited to, implied warranties of merchantability and fitness for a particular purpose. All information contained in this document is distributed with the understanding that the authors, publishers and distributors are not rendering legal, accounting or other professional advice or opinions on specific facts or matters and accordingly assume no liability whatsoever in connection with its use. In no event shall ACOLIN Fund Services AG and its related, affiliated and subsidiary companies be liable for any direct, indirect, special, incidental or consequential damages arising out of the use of any opinion or information expressly or implicitly contained in this document. Robeco Institutional Asset Management B.V. (Robeco) has a license as manager of Undertakings for Collective Investment in Transferable Securities (UCITS) and Alternative Investment Funds (AIFs) ("Fund(s)") from The Netherlands Authority for the Financial Markets in Amsterdam. Robeco is subject to limited regulation in the UK by the Financial Conduct Authority. Details about the extent of our regulation by the Financial Conduct Authority are available from us on request.